

Product datasheet for PH304524

CTRP6 (C1QTNF6) (NM_031910) Human Mass Spec Standard

Product data:

Product Type:	Mass Spec Standards
Description:	C1QTNF6 MS Standard C13 and N15-labeled recombinant protein (NP_114116)
Species:	Human
Expression Host:	HEK293
Expression cDNA Clone or AA Sequence:	RC204524
Predicted MW:	30.9 kDa
Protein Sequence:	>RC204524 protein sequence Red=Cloning site Green=Tags(s) MQWLRVRESPGEATGHRVTMVT AALGPVWAALLFLLMCEIPMVELTFDRAVASGCQRCCDSEDPLDPAH VSSASSSGRPHALPEIRPYINITILKGDKGDPGPMGLPGYMGREGPQGEPGQGSKGDKGEMGSPGAPCQ KRFFAFSVGRKTALHSGEDFQTLLEFRVFNLDGCFDMATGQFAAPLRGIYFFSLNVHSWNYKETYVHIM HNQKEAVILYAQPSESRIMQSQSVMLDLAYGDRVVWRLFKRQRENAIYSNDFDTYITFSGHLIKAEDD TRTRPLEQKLI SEEDLAANDILDYKDDDDKV
Tag:	C-Myc/DDK
Purity:	> 80% as determined by SDS-PAGE and Coomassie blue staining
Concentration:	>0.05 µg/µL as determined by microplate BCA method
Labeling Method:	Labeled with [U- ¹³ C ₆ , ¹⁵ N ₄]-L-Arginine and [U- ¹³ C ₆ , ¹⁵ N ₂]-L-Lysine
Buffer:	25 mM Tris-HCl, 100 mM glycine, pH 7.3
Storage:	Store at -80°C. Avoid repeated freeze-thaw cycles.
Stability:	Stable for 3 months from receipt of products under proper storage and handling conditions.
RefSeq:	NP_114116
RefSeq Size:	2954
RefSeq ORF:	834
Synonyms:	CTFP6; CTRP6; ZACRP6
Locus ID:	114904
UniProt ID:	Q9BXI9 , A0A024R1J0

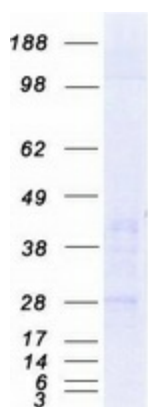


[View online »](#)

Cytogenetics: 22q12.3

Protein Families: Secreted Protein, Transmembrane

Product images:



Coomassie blue staining of purified C1QTNF6 protein (Cat# [TP304524]). The protein was produced from HEK293T cells transfected with C1QTNF6 cDNA clone (Cat# [RC204524]) using MegaTran 2.0 (Cat# [TT210002]).