

Product datasheet for PH304518

Epac1 (RAPGEF3) (NM_006105) Human Mass Spec Standard

Product data:

Product Type:	Mass Spec Standards
Description:	RAPGEF3 MS Standard C13 and N15-labeled recombinant protein (NP_006096)
Species:	Human
Expression Host:	HEK293
Expression cDNA Clone or AA Sequence:	RC204518
Predicted MW:	103.7 kDa
Protein Sequence:	>RC204518 protein sequence Red=Cloning site Green=Tags(s)

MKVGWPGESCWQVGLPVEDSPALGAPRVGALPDVPEGTLLNMVLRMRHRPRSCSYQLLLEHQRPSCIQG
LRWTPLTNSEESLDFSESELEQASTERVLRAGRQLHRHLLATCPNLIIRDRKYHLRLYRQCCSGRELVDGIL
ALGLGVHSRSQVVGICQVLLDEGALCHVKHDWAFQDRDAQFYRFPGPEPEPVGTHEMEEELAEAVALLSQ
RGPDALLTVALRKPPGQRTDEELDLIFEELLHIKAVAHLSNSVKRELAAVLLFEPHSAKAGTVLFSQGDKG
TSWYIIWKGSVNVVTHGKGLVTTLHEGDDFGQLALVNDAPRAATIIILREDNCHFLRVDKQDFNRIKQDVE
AKTMRLEEKGKVVLLERASQAGPSRPPTPGRNRYTVMSGTPEKILELLEAMGPDSSAHDPTETFLSD
FLLTHRVMFMPAQLCAALLHHFHVEPAGGSEQERSTYVCNKRQQILRLVSQWVALYGSMLHTDPVATSFL
QKLSDLVGRDTRLSNLLREQWPERRRCHRELENGCGNASPQMKARNLPVWLPNQDEPLPGSSCAIQVGDV
PYDICRPDHSVLTQLPVTASVREVMAALAQEDGWTGGQVLKVNVSAGDAIGLQPDARGVATSLGLNERL
FVYVNPQEVHELIPHPDQLGPTVGSAEGLDLVSAKDLAQGLTDHDWLSFNSTHQLVLIHYVLPQHLRDVT
TANLERFMRRFNELQYVWATELCLCPVGPRAQLLRKFIKLAHLKEQKNLSFFAVMFGLSNSAISRLA
HTWERLPHKVRKLYSALERLLDPSWNRVYRLALAKLSPVVPFMPPLLLKDMTFIHEGNHTLVENLINF
KMRMMARAARMLHCRSHNPVPLSPLRSRVSHLHEDSQVARISTCSEQSLSTRSPASTWAYVQQLKVIDN
QRELSRLSRELEP

TRTRPLEQKLISEEDLAANDILDYKDDDDKV

Tag:	C-Myc/DDK
Purity:	> 80% as determined by SDS-PAGE and Coomassie blue staining
Concentration:	>0.05 µg/µL as determined by microplate BCA method
Labeling Method:	Labeled with [U- ¹³ C ₆ , ¹⁵ N ₄]-L-Arginine and [U- ¹³ C ₆ , ¹⁵ N ₂]-L-Lysine
Buffer:	25 mM Tris-HCl, 100 mM glycine, pH 7.3
Storage:	Store at -80°C. Avoid repeated freeze-thaw cycles.
Stability:	Stable for 3 months from receipt of products under proper storage and handling conditions.



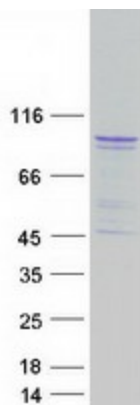
[View online »](#)

RefSeq: [NP_006096](#)
RefSeq Size: 5773
RefSeq ORF: 2772
Synonyms: bcm910; CAMP-GEFI; EPAC; EPAC1; HSU79275
Locus ID: 10411
UniProt ID: [O95398](#), [Q99777](#)
Cytogenetics: 12q13.11

Summary: Guanine nucleotide exchange factor (GEF) for RAP1A and RAP2A small GTPases that is activated by binding cAMP. Through simultaneous binding of PDE3B to RAPGEF3 and PIK3R6 is assembled in a signaling complex in which it activates the PI3K gamma complex and which is involved in angiogenesis. Plays a role in the modulation of the cAMP-induced dynamic control of endothelial barrier function through a pathway that is independent on Rho-mediated signaling. Required for the actin rearrangement at cell-cell junctions, such as stress fibers and junctional actin.[UniProtKB/Swiss-Prot Function]

Protein Pathways: Leukocyte transendothelial migration, Long-term potentiation

Product images:



Coomassie blue staining of purified RAPGEF3 protein (Cat# [TP304518]). The protein was produced from HEK293T cells transfected with RAPGEF3 cDNA clone (Cat# [RC204518]) using MegaTran 2.0 (Cat# [TT210002]).