

## Product datasheet for PH304498

### BCL2 (NM\_000633) Human Mass Spec Standard

#### Product data:

Product Type:	Mass Spec Standards
Description:	BCL2 MS Standard C13 and N15-labeled recombinant protein (NP_000624)
Species:	Human
Expression Host:	HEK293
Expression cDNA Clone or AA Sequence:	RC204498
Predicted MW:	26.1 kDa
Protein Sequence:	>RC204498 representing NM_000633 Red=Cloning site Green=Tags(s)  MAHAGRTGYDNREIVMKYIHYKLSQRGYEWDAGDVGAAPPGAAPAPGIFSSQPGHTPHPAASRDPVARTS PLQTPAAPGAAAGPALSPVPPVHLLTRQAGDDFSRRYRRDFAEMSSQLHLTPFTARGRFATVVEELFRD GVNWGRIVAFFEFGVMCVESVNREMSPLVDNIALWMTEYLNRLHTWIQDNGGWDAFVELYGPSMRPLF DFSWSLTKTLLSLALVGACITLGAYLGHK  TRTRPLEQKLISEEDLAANDILDYKDDDDKV
Tag:	C-Myc/DDK
Purity:	> 80% as determined by SDS-PAGE and Coomassie blue staining
Concentration:	>0.05 µg/µL as determined by microplate BCA method
Labeling Method:	Labeled with [U- 13C6, 15N4]-L-Arginine and [U- 13C6, 15N2]-L-Lysine
Buffer:	25 mM Tris-HCl, 100 mM glycine, pH 7.3
Storage:	Store at -80°C. Avoid repeated freeze-thaw cycles.
Stability:	Stable for 3 months from receipt of products under proper storage and handling conditions.
RefSeq:	<a href="#">NP_000624</a>
RefSeq Size:	6492
RefSeq ORF:	717
Synonyms:	Bcl-2; PPP1R50
Locus ID:	596
UniProt ID:	<a href="#">P10415</a> , <a href="#">A0A024R2B3</a>



[View online »](#)

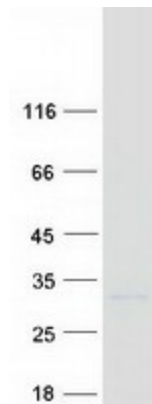
**Cytogenetics:** 18q21.33

**Summary:** This gene encodes an integral outer mitochondrial membrane protein that blocks the apoptotic death of some cells such as lymphocytes. Constitutive expression of BCL2, such as in the case of translocation of BCL2 to Ig heavy chain locus, is thought to be the cause of follicular lymphoma. Alternative splicing results in multiple transcript variants. [provided by RefSeq, Feb 2016]

**Protein Families:** Druggable Genome, ES Cell Differentiation/IPS, Stem cell - Pluripotency, Transmembrane

**Protein Pathways:** Amyotrophic lateral sclerosis (ALS), Apoptosis, Colorectal cancer, Focal adhesion, Neurotrophin signaling pathway, Pathways in cancer, Prostate cancer, Small cell lung cancer

### Product images:



Coomassie blue staining of purified BCL2 protein (Cat# [TP304498]). The protein was produced from HEK293T cells transfected with BCL2 cDNA clone (Cat# [RC204498]) using MegaTran 2.0 (Cat# [TT210002]).