

Product datasheet for PH304496

CD32B (FCGR2B) (NM_001002275) Human Mass Spec Standard

Product data:

Product Type:	Mass Spec Standards
Description:	FCGR2B MS Standard C13 and N15-labeled recombinant protein (NP_001002275)
Species:	Human
Expression Host:	HEK293
Expression cDNA Clone or AA Sequence:	RC204496
Predicted MW:	33.8 kDa
Protein Sequence:	>RC204496 representing NM_001002275 Red=Cloning site Green=Tags(s) MGILSFLPVLATESDWADCKSPQPWGHMLLWTAVLFLAPVAGTPAAPPKAVLKLEPQWINVLQEDSVTLT CRGTHSPESDSIQWFHNGNLIPHTHTQPSYRFKANNNDSGEYTCQTGQTSLSDPVHLTVLSEWLVLQTPHP EFQEGETIVLRCHSWKDKPLVKVTFQNGKSKKFSRSDPNFSIPQANSHSHSGDYHCTGNIGYTYLYSSKPV TITVQAPSSSPMGIIVAVVTGIAVAIAAVALIYCRKKRISALPGYPECREMGETLPEKPANPTNPDE ADKVGAEANTITYSLLMHPDALEEPDDQNR TRTRPLEQKLISEEDLAANDILDYKDDDDKV
Tag:	C-Myc/DDK
Purity:	> 80% as determined by SDS-PAGE and Coomassie blue staining
Concentration:	>0.05 µg/µL as determined by microplate BCA method
Labeling Method:	Labeled with [U- ¹³ C ₆ , ¹⁵ N ₄]-L-Arginine and [U- ¹³ C ₆ , ¹⁵ N ₂]-L-Lysine
Buffer:	25 mM Tris-HCl, 100 mM glycine, pH 7.3
Storage:	Store at -80°C. Avoid repeated freeze-thaw cycles.
Stability:	Stable for 3 months from receipt of products under proper storage and handling conditions.
RefSeq:	<u>NP_001002275</u>
RefSeq Size:	1630
RefSeq ORF:	930
Synonyms:	CD32; CD32B; FCG2; FCGR2; FCGR2C; FcRII-c; IGFR2
Locus ID:	2213



[View online »](#)

UniProt ID: [P31994](#)

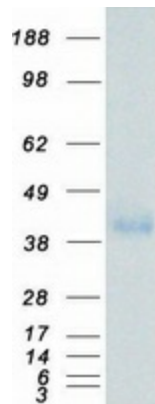
Cytogenetics: 1q23.3

Summary: The protein encoded by this gene is a low affinity receptor for the Fc region of immunoglobulin gamma complexes. The encoded protein is involved in the phagocytosis of immune complexes and in the regulation of antibody production by B-cells. Variations in this gene may increase susceptibility to systemic lupus erythematosus (SLE). Several transcript variants encoding different isoforms have been found for this gene. [provided by RefSeq, Jun 2010]

Protein Families: ES Cell Differentiation/IPS, Transmembrane

Protein Pathways: B cell receptor signaling pathway, Fc gamma R-mediated phagocytosis, Systemic lupus erythematosus

Product images:



Coomassie blue staining of purified FCGR2B protein (Cat# [TP304496]). The protein was produced from HEK293T cells transfected with FCGR2B cDNA clone (Cat# [RC204496]) using MegaTran 2.0 (Cat# [TT210002]).