

Product datasheet for PH304487

SLC1A4 (NM_003038) Human Mass Spec Standard

Product data:

Product Type:	Mass Spec Standards
Description:	SLC1A4 MS Standard C13 and N15-labeled recombinant protein (NP_003029)
Species:	Human
Expression Host:	HEK293
Expression cDNA Clone or AA Sequence:	RC204487
Predicted MW:	55.7 kDa
Protein Sequence:	>RC204487 protein sequence Red=Cloning site Green=Tags(s)

MEKSNETNGYLDSAQAGPAAGPGAPGTAAGRARRCAGFLRRQALVLLTVSGVLGAGLGAALRGLSLSRT
QVTYLAFPGEMLLRMLRMIILPLVVCSLVSGAASLDASCLGRLGGIAYVYFGLTTLASALAVAFI
PGSGAQLQSSDLGLEDSPVPKPVKEDVDFDLARNLFPNSLVVAAFRTYATDYKVVVTQNSSSGNVTHE
KIPIGTEIEGMNIGLVLFALVGVALKKLGSEGEDLIRFFNSLNEATMVLVSWIMWYVPGIMFLVGSK
IVEMKDIIVLVTSLGKYIFASILGHVIHGGIVLPLIYFVTRKNPFRFLGLLAPFATAFATCSSSATLP
SMMKCIENNGVDKRISRFILPIGATVNMGAAIFQCVAAVFIAQLNNVELNAGQIFITILVTATASSVGA
AGVPAGGVLTAIILEAIGLPHDLPLILAVDWIVDRTTTTVVNVEGDALGAGILHHLNQNQKATKKGEQELA
EVKVEAIPNCKSEEETSPLVTHQNAPAGPVASAPELESKESVL

TRTRPLEQKLISEEDLAANDILDYKDDDDKV

Tag:	C-Myc/DDK
Purity:	> 80% as determined by SDS-PAGE and Coomassie blue staining
Concentration:	>0.05 µg/µL as determined by microplate BCA method
Labeling Method:	Labeled with [U- ¹³ C ₆ , ¹⁵ N ₄]-L-Arginine and [U- ¹³ C ₆ , ¹⁵ N ₂]-L-Lysine
Buffer:	25 mM Tris-HCl, 100 mM glycine, pH 7.3
Storage:	Store at -80°C. Avoid repeated freeze-thaw cycles.
Stability:	Stable for 3 months from receipt of products under proper storage and handling conditions.
RefSeq:	<u>NP_003029</u>
RefSeq Size:	4611
RefSeq ORF:	1596



[View online »](#)

Synonyms: ASCT1; SATT; SPATCCM

Locus ID: 6509

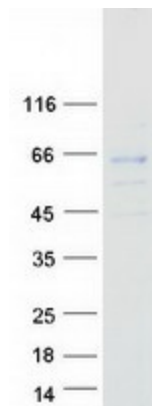
UniProt ID: [P43007](#)

Cytogenetics: 2p14

Summary: The protein encoded by this gene is a sodium-dependent neutral amino acid transporter for alanine, serine, cysteine, and threonine. Defects in this gene have been associated with developmental delay, microcephaly, and intellectual disability. [provided by RefSeq, Jan 2017]

Protein Families: Druggable Genome, Transmembrane

Product images:



Coomassie blue staining of purified SLC1A4 protein (Cat# [TP304487]). The protein was produced from HEK293T cells transfected with SLC1A4 cDNA clone (Cat# [RC204487]) using MegaTran 2.0 (Cat# [TT210002]).