

Product datasheet for PH304486

TRP2 (DCT) (NM_001922) Human Mass Spec Standard

Product data:

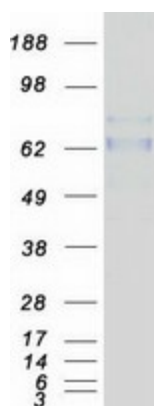
Product Type:	Mass Spec Standards
Description:	DCT MS Standard C13 and N15-labeled recombinant protein (NP_001913)
Species:	Human
Expression Host:	HEK293
Expression cDNA Clone or AA Sequence:	RC204486
Predicted MW:	59.1 kDa
Protein Sequence:	>RC204486 protein sequence Red=Cloning site Green=Tags(s)
	MSPLWWGFLLSCLGCKILPGAQQFPRVCM TVDSL VNKECCPRLGAESANVCGSQQGRGQCTEVRADTRP WSGPYILRNQDDRELWPRKFFHRTCKCTGNFAGYNCGDCKFGWTGPN CERKKPPVIRQNIHSLSPQEREQ FLGALDLAKKRVHPDYVIT TQHWLGLLGPNGTQPQFANCSVYDFVWLHYYSVRD TLLGPRPYRAIDFS HQGPAFVTWHRYHLLCLERDLQRLIGNESFALPYWNFATGRNECDVCTDQLFGAARPDDPTLISRNSRFS SWETVCDSLDDYNHLVTL CNGTYEGLLRNQMGRNSMKLPTLKDIRDCLSLQKFDNPPFFQNSTFSFRNA LEGFDKADGTLDSQVMSLHNLVHSFLNGTALPHSAANDPIFVVLHSFTDAIFDEWMKRFNPPADAWPQE LAPIGHNRMYNMVPPFPV TNEELFLTSDQLGYSYAIDL PVSVEETPGWPTLLVVMGTLVALVGLFVLL AFLQYRRLRKGYTPLMETHLSSKRYTEEA
	TRTRPLEQKLI SEEDLAANDILDYKDDDDKV
Tag:	C-Myc/DDK
Purity:	> 80% as determined by SDS-PAGE and Coomassie blue staining
Concentration:	>0.05 µg/µL as determined by microplate BCA method
Labeling Method:	Labeled with [U- 13C6, 15N4]-L-Arginine and [U- 13C6, 15N2]-L-Lysine
Buffer:	25 mM Tris-HCl, 100 mM glycine, pH 7.3
Storage:	Store at -80°C. Avoid repeated freeze-thaw cycles.
Stability:	Stable for 3 months from receipt of products under proper storage and handling conditions.
RefSeq:	<u>NP_001913</u>
RefSeq Size:	2304
RefSeq ORF:	1557



[View online »](#)

Synonyms:	TRP-2; TYRP2
Locus ID:	1638
UniProt ID:	P40126
Cytogenetics:	13q32.1
Summary:	Catalyzes the conversion of L-dopachrome into 5,6-dihydroxyindole-2-carboxylic acid (DHICA) (PubMed:8306979). Involved in regulating eumelanin and pheomelanin levels. [UniProtKB/Swiss-Prot Function]
Protein Families:	Transmembrane
Protein Pathways:	Melanogenesis, Metabolic pathways, Tyrosine metabolism

Product images:



Coomassie blue staining of purified DCT protein (Cat# [TP304486]). The protein was produced from HEK293T cells transfected with DCT cDNA clone (Cat# [RC204486]) using MegaTran 2.0 (Cat# [TT210002]).