

Product datasheet for PH304481

MEK6 (MAP2K6) (NM_002758) Human Mass Spec Standard

Product data:

Product Type:	Mass Spec Standards
Description:	MAP2K6 MS Standard C13 and N15-labeled recombinant protein (NP_002749)
Species:	Human
Expression Host:	HEK293
Expression cDNA Clone or AA Sequence:	RC204481
Predicted MW:	37.5 kDa
Protein Sequence:	>RC204481 protein sequence Red=Cloning site Green=Tags(s)

MSQSKGKRNPLKIPKEAFEQPQTSSTPPRDLDSKACISIGNQNFEVKADDLEPIMELGRGAYGVVEKM
RHVPSGQIMAVKRIRATVNSQEQKRLMLDISMRTVDCPFTVTFYGFALFREGDVVICMELMDTSLDKFY
KQVIDKGQTIPEDILGKIAVSIVKALEHLHSLKSVIHRDVKPSNVLINALGQVKMCDGIFISGYLVDSVAK
TIDAGCKPYMAPERINPELNQKGYSVKSDIWSLGITMIELAILRFPYDSWGTPFQQLKQVVEEPPQLPA
DKFSAEFVDFTSQCLKKNSKERPTYPELMQHPFFTLHESKGTDVASFVKLILGD

TRTRPLEQKLISEEDLAANDILDYKDDDDKV

Tag:	C-Myc/DDK
Purity:	> 80% as determined by SDS-PAGE and Coomassie blue staining
Concentration:	>0.05 µg/µL as determined by microplate BCA method
Labeling Method:	Labeled with [U- ¹³ C ₆ , ¹⁵ N ₄]-L-Arginine and [U- ¹³ C ₆ , ¹⁵ N ₂]-L-Lysine
Buffer:	25 mM Tris-HCl, 100 mM glycine, pH 7.3
Storage:	Store at -80°C. Avoid repeated freeze-thaw cycles.
Stability:	Stable for 3 months from receipt of products under proper storage and handling conditions.
RefSeq:	<u>NP_002749</u>
RefSeq Size:	1879
RefSeq ORF:	1002
Synonyms:	MAPKK6; MEK6; MKK6; PRKMK6; SAPKK-3; SAPKK3
Locus ID:	5608



[View online »](#)

UniProt ID: [P52564](#), [A8K3Y2](#)

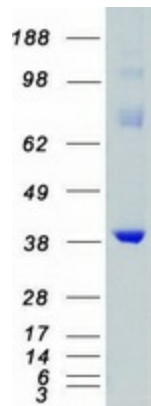
Cytogenetics: 17q24.3

Summary: This gene encodes a member of the dual specificity protein kinase family, which functions as a mitogen-activated protein (MAP) kinase kinase. MAP kinases, also known as extracellular signal-regulated kinases (ERKs), act as an integration point for multiple biochemical signals. This protein phosphorylates and activates p38 MAP kinase in response to inflammatory cytokines or environmental stress. As an essential component of p38 MAP kinase mediated signal transduction pathway, this gene is involved in many cellular processes such as stress induced cell cycle arrest, transcription activation and apoptosis. [provided by RefSeq, Jul 2008]

Protein Families: Druggable Genome, Protein Kinase

Protein Pathways: Amyotrophic lateral sclerosis (ALS), Fc epsilon RI signaling pathway, GnRH signaling pathway, MAPK signaling pathway, Toll-like receptor signaling pathway

Product images:



Coomassie blue staining of purified MAP2K6 protein (Cat# [TP304481]). The protein was produced from HEK293T cells transfected with MAP2K6 cDNA clone (Cat# [RC204481]) using MegaTran 2.0 (Cat# [TT210002]).