

Product datasheet for PH304480

Syntrophin alpha 1 (SNTA1) (NM_003098) Human Mass Spec Standard

Product data:

Product Type:	Mass Spec Standards
Description:	SNTA1 MS Standard C13 and N15-labeled recombinant protein (NP_003089)
Species:	Human
Expression Host:	HEK293
Expression cDNA Clone or AA Sequence:	RC204480
Predicted MW:	53.9 kDa
Protein Sequence:	>RC204480 protein sequence Red=Cloning site Green=Tags(s)

MASGRRAPRTGLLELRAGAGSGAGGERWQRVLLSLAEDVLTVSPADGDPGPEPGAPREQEPAQLNGAAEP
GAGPPQLPEALLQRRRVTVRKADAGGLGISIKGGRENKMPILISKIFKGLAADQTEALFVGDAILSVNG
EDLSSATHDEAVQLKKTGKEVVLEVKYMKDVSPYFKNSTGGTSVGDWSPASPLQRQPSSPGPTPRNFS
EAKHMSLKMAYVSKRCTPNDEPRYLEICSADGQDTLFLRAKDEASARSWATAIQAVNTLTPRVKDELQ
ALLAATSTAGSQDIKQIGWLTEQLPSGGTAPTLALLTEKELLYLSLPETREALSRPARTAPLIATRLVH
SGPSKGSVPYDAELSFALRTGTRHGVDTHLFSVESPQELAAWTRQLVDGCHRAAEGVQEVSTACTWNGRP
CSLSVHIDKGFTLWAAEPGAARAVLLRQPFKELQMSDDGASLLFLDFGGAEGEIQLDLHSCPKTIVFII
HSFLSAKVTRLGLLA

SGPTRTRPLEQKLI SEEDLAANDILDYKDDDDKV

Tag:	C-Myc/DDK
Purity:	> 80% as determined by SDS-PAGE and Coomassie blue staining
Concentration:	>0.05 µg/µL as determined by microplate BCA method
Labeling Method:	Labeled with [U- ¹³ C ₆ , ¹⁵ N ₄]-L-Arginine and [U- ¹³ C ₆ , ¹⁵ N ₂]-L-Lysine
Buffer:	25 mM Tris-HCl, 100 mM glycine, pH 7.3
Storage:	Store at -80°C. Avoid repeated freeze-thaw cycles.
Stability:	Stable for 3 months from receipt of products under proper storage and handling conditions.
RefSeq:	<u>NP_003089</u>
RefSeq Size:	2345
RefSeq ORF:	1515



[View online »](#)

Synonyms: dj1187J4.5; LQT12; SNT1; TACIP1

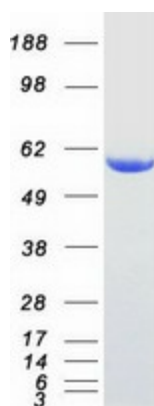
Locus ID: 6640

UniProt ID: [Q13424](#)

Cytogenetics: 20q11.21

Summary: Syntrophins are cytoplasmic peripheral membrane scaffold proteins that are components of the dystrophin-associated protein complex. This gene is a member of the syntrophin gene family and encodes the most common syntrophin isoform found in cardiac tissues. The N-terminal PDZ domain of this syntrophin protein interacts with the C-terminus of the pore-forming alpha subunit (SCN5A) of the cardiac sodium channel Nav1.5. This protein also associates cardiac sodium channels with the nitric oxide synthase-PMCA4b (plasma membrane Ca-ATPase subtype 4b) complex in cardiomyocytes. This gene is a susceptibility locus for Long-QT syndrome (LQT) - an inherited disorder associated with sudden cardiac death from arrhythmia - and sudden infant death syndrome (SIDS). This protein also associates with dystrophin and dystrophin-related proteins at the neuromuscular junction and alters intracellular calcium ion levels in muscle tissue. [provided by RefSeq, Jan 2013]

Product images:



Coomassie blue staining of purified SNTA1 protein (Cat# [TP304480]). The protein was produced from HEK293T cells transfected with SNTA1 cDNA clone (Cat# [RC204480]) using MegaTran 2.0 (Cat# [TT210002]).