

Product datasheet for PH304452

SEC62 (NM_003262) Human Mass Spec Standard

Product data:

Product Type:	Mass Spec Standards
Description:	SEC62 MS Standard C13 and N15-labeled recombinant protein (NP_003253)
Species:	Human
Expression Host:	HEK293
Expression cDNA Clone or AA Sequence:	RC204452
Predicted MW:	45.7 kDa
Protein Sequence:	>RC204452 representing NM_003262 Red=Cloning site Green=Tags(s)

MAERRRHKKRIQEVEGPEPSKEEKAVAKYLRFNCPKSTNMMGHRVDYFIASKAVDCLLDKSKWAKAKKGEEA
LFTTRESVVDYCNRLKQFFHRALKVMKMYDKDIKKEKDKGKAESGKEEDKSKKENIKDEKTKKEKE
KKKDGEKEESKKEETPGTPKKKTKKKFKLEPHDDQVFLDGVNEVYVWIYDPVHFKTFVMDLILVIAVIAA
TLFPLWPAEMRVGVVYLSVGAGCFVASILLAVARCILFLIWLITGGRHHFWFLPNLTADVGFIDSRFP
LYTHEYKGPKADLKKDEKSETKKQKSDSEKSDSEKKEDEEGKVGPGNHGTEGSGGERHSDDSDRRRED
DRSQHSSGNGNDFEMITKEELEQQTDGDCEDEEEENDGETPKSSHEKS

TRTRPLEQKLISEEDLAANDILDYKDDDDKV

Tag:	C-Myc/DDK
Purity:	> 80% as determined by SDS-PAGE and Coomassie blue staining
Concentration:	>0.05 µg/µL as determined by microplate BCA method
Labeling Method:	Labeled with [U- ¹³ C ₆ , ¹⁵ N ₄]-L-Arginine and [U- ¹³ C ₆ , ¹⁵ N ₂]-L-Lysine
Buffer:	25 mM Tris-HCl, 100 mM glycine, pH 7.3
Storage:	Store at -80°C. Avoid repeated freeze-thaw cycles.
Stability:	Stable for 3 months from receipt of products under proper storage and handling conditions.
RefSeq:	NP_003253
RefSeq Size:	6541
RefSeq ORF:	1197
Synonyms:	Dtrp1; HTP1; TLOC1; TP-1
Locus ID:	7095



[View online »](#)

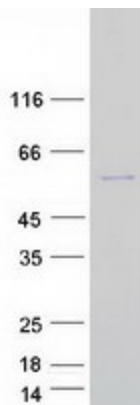
UniProt ID: [Q99442](#)

Cytogenetics: 3q26.2

Summary: The Sec61 complex is the central component of the protein translocation apparatus of the endoplasmic reticulum (ER) membrane. The protein encoded by this gene and SEC63 protein are found to be associated with ribosome-free SEC61 complex. It is speculated that Sec61-Sec62-Sec63 may perform post-translational protein translocation into the ER. The Sec61-Sec62-Sec63 complex might also perform the backward transport of ER proteins that are subject to the ubiquitin-proteasome-dependent degradation pathway. The encoded protein is an integral membrane protein located in the rough ER. [provided by RefSeq, Jul 2008]

Protein Families: Druggable Genome, Transmembrane

Product images:



Coomassie blue staining of purified SEC62 protein (Cat# [TP304452]). The protein was produced from HEK293T cells transfected with SEC62 cDNA clone (Cat# [RC204452]) using MegaTran 2.0 (Cat# [TT210002]).