

Product datasheet for PH304450

Cleavage stimulation factor 2 (CSTF2) (NM_001325) Human Mass Spec Standard

Product data:

| | |
|---------------------------------------|---|
| Product Type: | Mass Spec Standards |
| Description: | CSTF2 MS Standard C13 and N15-labeled recombinant protein (NP_001316) |
| Species: | Human |
| Expression Host: | HEK293 |
| Expression cDNA Clone or AA Sequence: | RC204450 |
| Predicted MW: | 61 kDa |
| Protein Sequence: | >RC204450 protein sequence Red=Cloning site Green=Tags(s) |

MAGLTVRDPVAVDRSLRSVFNIPYEATEEQKIDIFSEVGPVVSFRLVYDRETGKPKGYGFCEYQDQETA
LSAMRNLNREFSGRALRVDNAAASEKNKEELKSLGTGAPVIESPYGETISPEDAPESISKAVASLPPEQM
FELMKQMKLCVQNSPQEARNMLLQNPQLAYALLQAQVVMRIVDPEIALKILHRQTNIPTLIAGNPQPVHG
AGPGSGSNVSMNQNPQAPQAQSLGGMHVNGAPPLMQASMGGVPAAGQMPAAVTGPGGSLAPGGGMQA
QVGMPGSGPVSMEERGQVPMQDPRAAMQRGSLPANVPTPRGLLDGAPNDPRGGTLLSVTGEVEPRGYLGPP
HQGPPMHVPGHESRGPPPHELRGGPLPEPRPLMAEPRGPMLDQRPPLDGRGGRDPRGIDARGMEARAM
EARGLDARGLEARAMEARAMEARAMEARAMEARAMEVARGMMDTRGPVPGPRGPIPSGMQGPSINM
GAVVPQGSRQVPVMQGTGMQGASIQGGSQPGGSPGQNQVTPQDHEKAALIMQVLQLTADQIAMPLPEQR
QSILILKEQIQKSTGAP

TRTRPLEQKLISEEDLAANDILDYKDDDDKV

| | |
|------------------|--|
| Tag: | C-Myc/DDK |
| Purity: | > 80% as determined by SDS-PAGE and Coomassie blue staining |
| Concentration: | >0.05 µg/µL as determined by microplate BCA method |
| Labeling Method: | Labeled with [U- ¹³ C ₆ , ¹⁵ N ₄]-L-Arginine and [U- ¹³ C ₆ , ¹⁵ N ₂]-L-Lysine |
| Buffer: | 25 mM Tris-HCl, 100 mM glycine, pH 7.3 |
| Storage: | Store at -80°C. Avoid repeated freeze-thaw cycles. |
| Stability: | Stable for 3 months from receipt of products under proper storage and handling conditions. |
| RefSeq: | NP_001316 |
| RefSeq Size: | 2027 |
| RefSeq ORF: | 1731 |



[View online »](#)

Synonyms: CstF-64

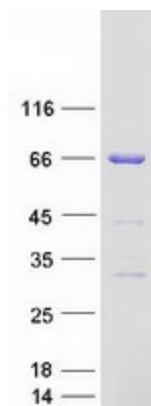
Locus ID: 1478

UniProt ID: [P33240](#)

Cytogenetics: Xq22.1

Summary: This gene encodes a nuclear protein with an RRM (RNA recognition motif) domain. The protein is a member of the cleavage stimulation factor (CSTF) complex that is involved in the 3' end cleavage and polyadenylation of pre-mRNAs. Specifically, this protein binds GU-rich elements within the 3'-untranslated region of mRNAs. [provided by RefSeq, Jul 2008]

Product images:



Coomassie blue staining of purified CSTF2 protein (Cat# [TP304450]). The protein was produced from HEK293T cells transfected with CSTF2 cDNA clone (Cat# [RC204450]) using MegaTran 2.0 (Cat# [TT210002]).