

## Product datasheet for PH304446

### CD34 (NM\_001025109) Human Mass Spec Standard

#### Product data:

Product Type:	Mass Spec Standards
Description:	CD34 MS Standard C13 and N15-labeled recombinant protein (NP_001020280)
Species:	Human
Expression Host:	HEK293
Expression cDNA Clone or AA Sequence:	RC204446
Predicted MW:	40.7 kDa
Protein Sequence:	>RC204446 protein sequence Red=Cloning site Green=Tags(s)

MLVRRGARAGPRMPRGWTALCLLSLLPSGFMSLDNNGTATPELPTQGTFSNVSTNVSQYQETTTTPSTLGST  
SLHPVSQHGNEATTNITETTvkFTSTSVITSVYGNtNssVQsQTSVISTVFTTPANVSTPETTLKPSLSP  
GNVSDLSTTSTSLATSPKPYTSSSPILSDIKAEIKCSGIREVKLTQGICLEQNKTSSCAEFKKDRGEG  
ARVLCGEEQADADAGAVCSLLLAQSEVRPQCLLLVLANRTEISSKLQLMKKHQSDLKKLGILDFTEQDV  
ASHQSYSQKTLIALVTSGALLAVLGITGYFLMNRRSWSPTGERLGEDPYTENGSGQGYSSPGTSPEAQ  
GKASVNRGAQENGTGQATSRNGHSARQHVVADTEL

TRTRPLEQKLISEEDLAANDILDYKDDDDKV

Tag:	C-Myc/DDK
Purity:	> 80% as determined by SDS-PAGE and Coomassie blue staining
Concentration:	>0.05 µg/µL as determined by microplate BCA method
Labeling Method:	Labeled with [U- <sup>13</sup> C <sub>6</sub> , <sup>15</sup> N <sub>4</sub> ]-L-Arginine and [U- <sup>13</sup> C <sub>6</sub> , <sup>15</sup> N <sub>2</sub> ]-L-Lysine
Buffer:	25 mM Tris-HCl, 100 mM glycine, pH 7.3
Storage:	Store at -80°C. Avoid repeated freeze-thaw cycles.
Stability:	Stable for 3 months from receipt of products under proper storage and handling conditions.
RefSeq:	<u>NP_001020280</u>
RefSeq Size:	2621
RefSeq ORF:	1155
Locus ID:	947
UniProt ID:	<u>P28906</u>



[View online »](#)

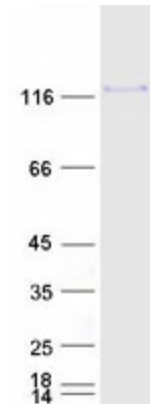
**Cytogenetics:** 1q32.2

**Summary:** The protein encoded by this gene may play a role in the attachment of stem cells to the bone marrow extracellular matrix or to stromal cells. This single-pass membrane protein is highly glycosylated and phosphorylated by protein kinase C. Two transcript variants encoding different isoforms have been found for this gene. [provided by RefSeq, Aug 2011]

**Protein Families:** Adult stem cells, Cancer stem cells, Druggable Genome, Embryonic stem cells, ES Cell Differentiation/IPS, Transmembrane

**Protein Pathways:** Cell adhesion molecules (CAMs), Hematopoietic cell lineage

**Product images:**



Coomassie blue staining of purified CD34 protein (Cat# [TP304446]). The protein was produced from HEK293T cells transfected with CD34 cDNA clone (Cat# [RC204446]) using MegaTran 2.0 (Cat# [TT210002]).