

## Product datasheet for PH304427

### NNT1 (CLCF1) (NM\_013246) Human Mass Spec Standard

#### Product data:

Product Type:	Mass Spec Standards
Description:	CLCF1 MS Standard C13 and N15-labeled recombinant protein (NP_037378)
Species:	Human
Expression Host:	HEK293
Expression cDNA Clone or AA Sequence:	RC204427
Predicted MW:	25.2 kDa
Protein Sequence:	>RC204427 protein sequence Red=Cloning site Green=Tags(s)  MDLRAGDSWMLACLCTVLWHLPAVPALNRTGDPGPGPSIQKTYDLTRYLEHQLRSLAGTYLNYLGPPFN EPDFNPPRLGAETLPRATVDLEWVWVSLNDKRLRLTQNYEAYSHLLCYLRGLNRQAATAELRRSLAHFCTSL QGLLGSIAGVMAALGYPLPQPLPGTEPTWTPGPAHSDFLQKMDDFWLLKELQTLWVRSKDFNRLKMKMQ PPAAAVTLHLGAHGF  TRTRPLEQKLI SEEDLAANDILDYKDDDDKV
Tag:	C-Myc/DDK
Purity:	> 80% as determined by SDS-PAGE and Coomassie blue staining
Concentration:	>0.05 µg/µL as determined by microplate BCA method
Labeling Method:	Labeled with [U- <sup>13</sup> C <sub>6</sub> , <sup>15</sup> N <sub>4</sub> ]-L-Arginine and [U- <sup>13</sup> C <sub>6</sub> , <sup>15</sup> N <sub>2</sub> ]-L-Lysine
Buffer:	25 mM Tris-HCl, 100 mM glycine, pH 7.3
Storage:	Store at -80°C. Avoid repeated freeze-thaw cycles.
Stability:	Stable for 3 months from receipt of products under proper storage and handling conditions.
RefSeq:	<a href="#">NP_037378</a>
RefSeq Size:	1860
RefSeq ORF:	675
Synonyms:	BSF-3; BSF3; CISS2; CLC; NNT-1; NNT1; NR6
Locus ID:	23529
UniProt ID:	<a href="#">Q9UBD9</a>



[View online »](#)

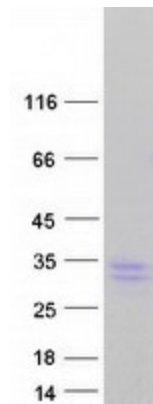
**Cytogenetics:** 11q13.2

**Summary:** This gene is a member of the glycoprotein (gp)130 cytokine family and encodes cardiotrophin-like cytokine factor 1 (CLCF1). CLCF1 forms a heterodimer complex with cytokine receptor-like factor 1 (CRLF1). This dimer competes with ciliary neurotrophic factor (CNTF) for binding to the ciliary neurotrophic factor receptor (CNTFR) complex, and activates the Jak-STAT signaling cascade. CLCF1 can be actively secreted from cells by forming a complex with soluble type I CRLF1 or soluble CNTFR. CLCF1 is a potent neurotrophic factor, B-cell stimulatory agent and neuroendocrine modulator of pituitary corticotroph function. Defects in CLCF1 cause cold-induced sweating syndrome 2 (CISS2). This syndrome is characterized by a profuse sweating after exposure to cold as well as congenital physical abnormalities of the head and spine. Alternative splicing results in multiple transcript variants encoding distinct isoforms.[provided by RefSeq, Oct 2009]

**Protein Families:** Druggable Genome, Secreted Protein

**Protein Pathways:** Cytokine-cytokine receptor interaction, Jak-STAT signaling pathway

### Product images:



Coomassie blue staining of purified CLCF1 protein (Cat# [TP304427]). The protein was produced from HEK293T cells transfected with CLCF1 cDNA clone (Cat# [RC204427]) using MegaTran 2.0 (Cat# [TT210002]).