

Product datasheet for PH304426

Rabex5 (RABGEF1) (NM_014504) Human Mass Spec Standard

Product data:

Product Type:	Mass Spec Standards
Description:	RABGEF1 MS Standard C13 and N15-labeled recombinant protein (NP_055319)
Species:	Human
Expression Host:	HEK293
Expression cDNA Clone or AA Sequence:	RC204426
Predicted MW:	56.9 kDa
Protein Sequence:	>RC204426 protein sequence Red=Cloning site Green=Tags(s)

MSLKSERRGIHVDQSDLLCKKGCYYGNPAWQGFCSKCWREEYHKARQKQIQEDWELAERLQREEEFAFA
SSQSSQGAQSLTFSKFEEKKTNEKTRKVTTVKKFFSASSRVGSKKEIQEAKAPSPSINRQTSIETDRVSK
EFIEFLKTFHKTGQEIYKQTKLFLEGMHYKRDLSEEQSECAQDFYHNVAERMQTRGKVPPEVEKIMDQ
IEKYIMTRLKYVFCPETTDDEKKDLAIQKRIRALRWVTPQMLCVPVNEDIPEVSDMVVKAITDIIEMDS
KRVPRDKLACITKCSKHIFNAIKITKNEPASADDFLPTLIYIVLKGPPRLQSNIQYITRFCNPSRLMTG
EDGYFTNLCCAFAVIEKLDQSLNLSQEDFDRYMSGQTSRPRQEAESWSPDACLGVKQMYKNL DLLSQL
NERQERIMNEAKKLEKDLIDWTDGIAREVQDIVEKYPLEIKPPNQPLAAIDSENVENDKLPPLQPQVYVA
G

TRTRPLEQKLI SEEDLAANDILDYKDDDDKV

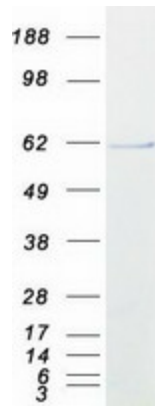
Tag:	C-Myc/DDK
Purity:	> 80% as determined by SDS-PAGE and Coomassie blue staining
Concentration:	>0.05 µg/µL as determined by microplate BCA method
Labeling Method:	Labeled with [U- ¹³ C ₆ , ¹⁵ N ₄]-L-Arginine and [U- ¹³ C ₆ , ¹⁵ N ₂]-L-Lysine
Buffer:	25 mM Tris-HCl, 100 mM glycine, pH 7.3
Storage:	Store at -80°C. Avoid repeated freeze-thaw cycles.
Stability:	Stable for 3 months from receipt of products under proper storage and handling conditions.
RefSeq:	<u>NP_055319</u>
RefSeq Size:	3832
RefSeq ORF:	1473



[View online »](#)

Synonyms:	rabex-5; RABEX5; RAP1
Locus ID:	27342
UniProt ID:	Q9UJ41 , A0A024RDL6 , A0A0A0MSJ3
Cytogenetics:	7q11.21
Summary:	RABGEF1 forms a complex with rabaptin-5 (RABPT5; MIM 603616) that is required for endocytic membrane fusion, and it serves as a specific guanine nucleotide exchange factor (GEF) for RAB5 (RAB5A; MIM 179512) (Horiuchi et al., 1997 [PubMed 9323142]).[supplied by OMIM, Mar 2010]

Product images:



Coomassie blue staining of purified RABGEF1 protein (Cat# [TP304426]). The protein was produced from HEK293T cells transfected with RABGEF1 cDNA clone (Cat# [RC204426]) using MegaTran 2.0 (Cat# [TT210002]).