

Product datasheet for PH304420

CHIC2 (NM_012110) Human Mass Spec Standard

Product data:

Product Type:	Mass Spec Standards
Description:	CHIC2 MS Standard C13 and N15-labeled recombinant protein (NP_036242)
Species:	Human
Expression Host:	HEK293
Expression cDNA Clone or AA Sequence:	RC204420
Predicted MW:	19.3 kDa
Protein Sequence:	>RC204420 protein sequence Red=Cloning site Green=Tags(s) MADFDEIYEEEEDEERALEEQLLKYSPPVVRGSGHVTVFGLSNKFESEFPSSLTGKVAPEEFKASINR VNSCLKKNLPVNVRWLLCGCLCCCTLGCSMPVICLSKRTRRSIEKLLLEWENNRLYHKLCLHWRLSKRK CETNNMMEYVILIEFLPKTPIFRPD TRTRPLEQKLISEEDLAANDILDYKDDDDKV
Tag:	C-Myc/DDK
Purity:	> 80% as determined by SDS-PAGE and Coomassie blue staining
Concentration:	>0.05 µg/µL as determined by microplate BCA method
Labeling Method:	Labeled with [U- 13C6, 15N4]-L-Arginine and [U- 13C6, 15N2]-L-Lysine
Buffer:	25 mM Tris-HCl, 100 mM glycine, pH 7.3
Storage:	Store at -80°C. Avoid repeated freeze-thaw cycles.
Stability:	Stable for 3 months from receipt of products under proper storage and handling conditions.
RefSeq:	NP_036242
RefSeq Size:	1178
RefSeq ORF:	495
Synonyms:	BTL
Locus ID:	26511
UniProt ID:	Q9UKJ5



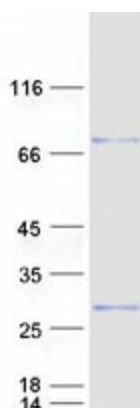
[View online »](#)

Cytogenetics: 4q12

Summary: This gene encodes a member of the CHIC family of proteins. The encoded protein contains a cysteine-rich hydrophobic (CHIC) motif, and is localized to vesicular structures and the plasma membrane. This gene is associated with some cases of acute myeloid leukemia. [provided by RefSeq, Jul 2008]

Protein Families: Druggable Genome, Transmembrane

Product images:



Coomassie blue staining of purified CHIC2 protein (Cat# [TP304420]). The protein was produced from HEK293T cells transfected with CHIC2 cDNA clone (Cat# [RC204420]) using MegaTran 2.0 (Cat# [TT210002]).