

Product datasheet for PH304416

SGK3 (NM_013257) Human Mass Spec Standard

Product data:

Product Type:	Mass Spec Standards
Description:	SGK3 MS Standard C13 and N15-labeled recombinant protein (NP_037389)
Species:	Human
Expression Host:	HEK293
Expression cDNA Clone or AA Sequence:	RC204416
Predicted MW:	57.1 kDa
Protein Sequence:	>RC204416 protein sequence Red=Cloning site Green=Tags(s)
	MQRDHTMDYKESCPVSIPSSDEHREKKKRFTVYKVLVSVGRSEWVFRRYAEFDKLYNTLKKQFPAMAL KIPAKRIFGDNFDPDFIKQRRAGLNEFIQNLVRYPELYNHPDVRAFLQMDSPKHQSDPSEDEDERSSQKL HSTSQNINLGPSONPHAKPTDFDFLKVIGKGSFGKVLAKRKLKGKLYAVKVLQKKIVLNRKEQKHIMAE RNVLLKNVKHPFLVGLHYSFQTTEKLYFVLDVNGGELFFHLQRERSFPEHRARFYAAEIASALGYLHSI KIVYRDLKPENILLDSVGHVVL TDFGLCKEGIAISDTTTF CGTPEYLAPEVIRKQPYDNTVDWWCLGAV LYEMLYGLPPFYCRDVAEMYDNILHKPLSLRPGVSLTAWSI EELLEKDRQNRLGAKEDFLEIQNHPPFE SLSWADLVQKKIPPPFNPVAGPDDIRNFDTAFTEETVPYSVCVSSDYSIVNASVLEADDAFVGFYSYAPP SEDLFL
	TRTRPLEQKLI SEEDLAANDILDYKDDDDKV
Tag:	C-Myc/DDK
Purity:	> 80% as determined by SDS-PAGE and Coomassie blue staining
Concentration:	>0.05 µg/µL as determined by microplate BCA method
Labeling Method:	Labeled with [U- ¹³ C ₆ , ¹⁵ N ₄]-L-Arginine and [U- ¹³ C ₆ , ¹⁵ N ₂]-L-Lysine
Buffer:	25 mM Tris-HCl, 100 mM glycine, pH 7.3
Storage:	Store at -80°C. Avoid repeated freeze-thaw cycles.
Stability:	Stable for 3 months from receipt of products under proper storage and handling conditions.
RefSeq:	<u>NP_037389</u>
RefSeq Size:	4206
RefSeq ORF:	1488



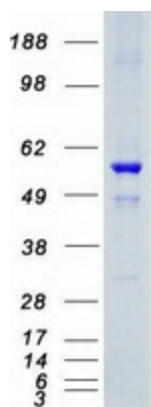
[View online »](#)

Synonyms: CISK; SGK2; SGKL
Locus ID: 23678
UniProt ID: [Q96BR1](#), [A0A024R807](#), [Q53EW6](#), [Q5H9Q5](#)
Cytogenetics: 8q13.1

Summary: This gene is a member of the Ser/Thr protein kinase family and encodes a phosphoprotein with a PX (phox homology) domain. The protein phosphorylates several target proteins and has a role in neutral amino acid transport and activation of potassium and chloride channels. Alternate transcriptional splice variants, encoding different isoforms, have been characterized. [provided by RefSeq, Jul 2008]

Protein Families: Druggable Genome, Protein Kinase

Product images:



Coomassie blue staining of purified SGK3 protein (Cat# [TP304416]). The protein was produced from HEK293T cells transfected with SGK3 cDNA clone (Cat# [RC204416]) using MegaTran 2.0 (Cat# [TT210002]).