

Product datasheet for PH304415

GDPD2 (NM_017711) Human Mass Spec Standard

Product data:

Product Type:	Mass Spec Standards
Description:	GDPD2 MS Standard C13 and N15-labeled recombinant protein (NP_060181)
Species:	Human
Expression Host:	HEK293
Expression cDNA Clone or AA Sequence:	RC204415
Predicted MW:	61.7 kDa
Protein Sequence:	>RC204415 protein sequence Red=Cloning site Green=Tags(s)

MAESPGCCSVWARCLHCLYSCHWRKCPREMRQTSKDCIWFGLLFLTFLLSLSWLYIGLVLLNDLHNFNE
FLFRRWGHMWDWLAFLLVISLLVTYASLLLVLALLRLCRQPLHLHSLHKVLLLLIMLLVAAGLVGLDI
QWQEWHSRLRVSLQATAPFLHIGAAAGIALLAWPVADTFYRIHRRGPKILLLLFFGVVLYIYLAPLCIS
SPCIMPRDLPPKPLVGHGAPMLAPENTLMSLRKTAECGATVFETDMVSSDGVFPLMHDEHLSRTTN
VASVFPTRITAHSSDFSWTELKRLNAGSWFLERRPFWGAKPLAGPDQKEAESQTPVALEELLEEEAALNL
SIMFDLRRPPQNHTYYDTFVIQTLETVLNARVPQAMVFWLPDEDANVQRRAPGMRQIYGRQGGNRTERP
QFLNLPYQDLPLLDIKALHKDNVSVNLFVVKPWLFSLLWCAGVDSVTTNDCQLLQQMRYPIWLIPTQTY
LIIWVITNCVSTMLLLWTFLLQRRFVKKRGKTGLETAVLLTRINNFME

TRTRPLEQKLISEEDLAANDILDYKDDDDKV

Tag:	C-Myc/DDK
Purity:	> 80% as determined by SDS-PAGE and Coomassie blue staining
Concentration:	>0.05 µg/µL as determined by microplate BCA method
Labeling Method:	Labeled with [U- 13C6, 15N4]-L-Arginine and [U- 13C6, 15N2]-L-Lysine
Buffer:	25 mM Tris-HCl, 100 mM glycine, pH 7.3
Storage:	Store at -80°C. Avoid repeated freeze-thaw cycles.
Stability:	Stable for 3 months from receipt of products under proper storage and handling conditions.
RefSeq:	<u>NP_060181</u>
RefSeq Size:	2290
RefSeq ORF:	1617



[View online »](#)

Synonyms: GDE3; OBDPF

Locus ID: 54857

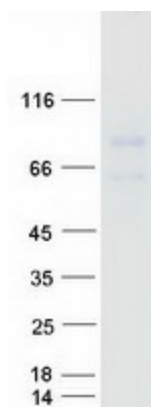
UniProt ID: [Q9HCC8](#)

Cytogenetics: Xq13.1

Summary: This gene encodes a member of the glycerophosphodiester phosphodiesterase enzyme family. The encoded protein hydrolyzes glycerophosphoinositol to produce inositol 1-phosphate and glycerol. This protein may have a role in osteoblast differentiation and growth. Alternate splicing results in multiple transcript variants. [provided by RefSeq, Jan 2010]

Protein Families: Transmembrane

Product images:



Coomassie blue staining of purified GDPD2 protein (Cat# [TP304415]). The protein was produced from HEK293T cells transfected with GDPD2 cDNA clone (Cat# [RC204415]) using MegaTran 2.0 (Cat# [TT210002]).