

## Product datasheet for PH304408

### AK3 (NM\_016282) Human Mass Spec Standard

#### Product data:

Product Type:	Mass Spec Standards
Description:	AK3 MS Standard C13 and N15-labeled recombinant protein (NP_057366)
Species:	Human
Expression Host:	HEK293
Expression cDNA Clone or AA Sequence:	RC204408
Predicted MW:	25.6 kDa
Protein Sequence:	>RC204408 protein sequence <b>Red</b> =Cloning site <b>Green</b> =Tags(s)  MGASARLLRAVIMGAPGSGKGTVSSRITTHFELKHLSSGDLLRDNMLRGTEIGVLAKAFIDQGKLI PDDV MTRLALHELK NLTQYSWLLDGFPR LTPQAEALDRAYQIDTVINLNV PFEVIKQRLTARWIHPASGRVYNI EFNPPKTVGIDDLTGEPLIQREDDK PETVIKRLKAYEDQTKPVLEYYQKKGVLETFSGTETNKIWPYVYA FLQTKVPQRSQKASVTP  <b>TRTRPLEQKLI SEEDLAANDILDYKDDDDKV</b>
Tag:	C-Myc/DDK
Purity:	> 80% as determined by SDS-PAGE and Coomassie blue staining
Concentration:	>0.05 µg/µL as determined by microplate BCA method
Labeling Method:	Labeled with [U- <sup>13</sup> C <sub>6</sub> , <sup>15</sup> N <sub>4</sub> ]-L-Arginine and [U- <sup>13</sup> C <sub>6</sub> , <sup>15</sup> N <sub>2</sub> ]-L-Lysine
Buffer:	25 mM Tris-HCl, 100 mM glycine, pH 7.3
Storage:	Store at -80°C. Avoid repeated freeze-thaw cycles.
Stability:	Stable for 3 months from receipt of products under proper storage and handling conditions.
RefSeq:	<a href="#">NP_057366</a>
RefSeq Size:	4333
RefSeq ORF:	681
Synonyms:	AK3L1; AK6; AKL3L; AKL3L1; FIX
Locus ID:	50808
UniProt ID:	<a href="#">Q9UII7</a> , <a href="#">Q7Z4Y4</a>



[View online »](#)

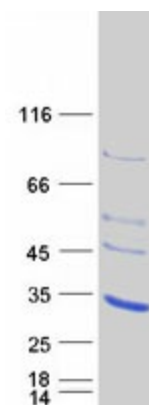
Cytogenetics: 9p24.1

**Summary:** The protein encoded by this gene is a GTP:ATP phosphotransferase that is found in the mitochondrial matrix. Several transcript variants encoding a few different isoforms have been found for this gene. [provided by RefSeq, Dec 2010]

**Protein Families:** Druggable Genome

**Protein Pathways:** Pyrimidine metabolism

### Product images:



Coomassie blue staining of purified AK3 protein (Cat# [TP304408]). The protein was produced from HEK293T cells transfected with AK3 cDNA clone (Cat# [RC204408]) using MegaTran 2.0 (Cat# [TT210002]).