

Product datasheet for PH304404

SLP76 (LCP2) (NM_005565) Human Mass Spec Standard

Product data:

Product Type:	Mass Spec Standards
Description:	LCP2 MS Standard C13 and N15-labeled recombinant protein (NP_005556)
Species:	Human
Expression Host:	HEK293
Expression cDNA Clone or AA Sequence:	RC204404
Predicted MW:	60.2 kDa
Protein Sequence:	>RC204404 protein sequence Red=Cloning site Green=Tags(s)

MALRNVPFRSEVLGWDPDSLADYFKKLNKYDCEKAVKKYHIDGARFLNLTENDIQKFPKLRVPILSKLSQ
EINKNEERRSIFTRKPQVPRFPEETESHEEDNGWSSFEEDDYESPNDQDGEDDGDYESPNEEEAPVE
DDADYEPPPSNDEEALQNSILPAKFPNSNSMYIDRPPSGKTPQQPPVPPQRPMAALPPPAGRNHSPLP
PPQTNHEEPSRSRNHKTAKLPAPSIDRSTKPLDRSLAPFDREPFTLGKKPPFSDKPSIPAGRSLGEHLP
KIQKPLPPTTERHERSSPLPGKKPPVPKHGWGPDREDDVHQRPLPQPALLPMSNTFSPSRSTKPS
PMNPLPSSHMPGAFSESNSFPQSASLPPYFSQGPNRPPIRAEGRNFLPLPNKPRPPSPAEEENSLNE
EWYVSYITRPEAEALRKINQDGTFLVRDSSKTTTNPYVLMVLVKDKVYNIQIRYQKESQVYLLGTGLR
GKEDFLSVSDIIDYFRKMPLLLIDGKNRGSRYQCTLTHAAGYP

TRTRPLEQKLISEEDLAANDILDYKDDDDKV

Tag:	C-Myc/DDK
Purity:	> 80% as determined by SDS-PAGE and Coomassie blue staining
Concentration:	>0.05 µg/µL as determined by microplate BCA method
Labeling Method:	Labeled with [U- 13C6, 15N4]-L-Arginine and [U- 13C6, 15N2]-L-Lysine
Buffer:	25 mM Tris-HCl, 100 mM glycine, pH 7.3
Storage:	Store at -80°C. Avoid repeated freeze-thaw cycles.
Stability:	Stable for 3 months from receipt of products under proper storage and handling conditions.
RefSeq:	<u>NP_005556</u>
RefSeq Size:	2472
RefSeq ORF:	1599



[View online »](#)

Synonyms: IMD81; SLP-76; SLP76

Locus ID: 3937

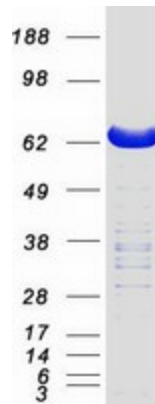
UniProt ID: [Q13094](#)

Cytogenetics: 5q35.1

Summary: This gene encodes an adapter protein that acts as a substrate of the T cell antigen receptor (TCR)-activated protein tyrosine kinase pathway. The encoded protein associates with growth factor receptor bound protein 2, and is thought to play a role TCR-mediated intracellular signal transduction. A similar protein in mouse plays a role in normal T-cell development and activation. Mice lacking this gene show subcutaneous and intraperitoneal fetal hemorrhaging, dysfunctional platelets and impaired viability. [provided by RefSeq, Nov 2016]

Protein Pathways: Fc epsilon RI signaling pathway, Natural killer cell mediated cytotoxicity, T cell receptor signaling pathway

Product images:



Coomassie blue staining of purified LCP2 protein (Cat# [TP304404]). The protein was produced from HEK293T cells transfected with LCP2 cDNA clone (Cat# [RC204404]) using MegaTran 2.0 (Cat# [TT210002]).