

Product datasheet for PH304392

PTP alpha (PTPRA) (NM_080841) Human Mass Spec Standard

Product data:

Product Type:	Mass Spec Standards
Description:	PTPRA MS Standard C13 and N15-labeled recombinant protein (NP_543031)
Species:	Human
Expression Host:	HEK293
Expression cDNA Clone or AA Sequence:	RC204392
Predicted MW:	89.7 kDa
Protein Sequence:	>RC204392 protein sequence Red=Cloning site Green=Tags(s)

MDSWFI L VLLGSLICV SANNATTVAPSVGITRLINSSTAEPVKEEAKTSNPTSSLTSLSVAPTFSPNIT
LGPTYLTTVNSSDSNGTTRTASTNSIGITISPNGTWLPDNQFTDARTEPWEGNSSTAATTPETFPSPDE
TPIIAVMVALSLLVIVFIIIVLYMLRFKYYKQAGSHSNFRLSNGRTDVEPQSVPLLARSPSTNRKYP
PLPVDKLEEEINRRMADDNKLFREEFNALPACPIQATCEAASKEENKEKNRYVNI LPYDHSRVHLPVEG
VPDSYINASFINGYQEKNFIAAQGPKEETVNDFWRMIWEQNTATIVMVTNLKERKECKCAQYWPDQGC
WTYGNIRVSVEDVTLV DYTVRKFCIQQVGDMTNRKPQRLITQFHFTSWPDFGVPFPIGMLKFLKVKVA
CNPQYAGAI VVHCSAGVGRTGTFVVIDAMLDMHTERKVDVYGFVSRIRAQRCQM VQTD MQYVFIYQALL
EHYLYGDTELEVTSL ETLKQIYNKIPGTSNNGLEEEFKKLT SIKIQNDKMRTGNLPANMKKNRVLQIIP
YEFNRV IIPVKRGEENTDYVNASFIDGYRQKDSYIASQGPLLHTIEDFWRMIWEWKSCSIVMLTELEERG
QEKCAQYWP SDGLVSYGDI TVELKKEEECESYTVRDLLVTNTRENKSRQIRQFHFGWPEVGI PSDGKGM
ISIIAAVQKQQQSGNHPITVHCSAGAGRTGTF CALSTVLERVKAEGILDV FQTVKSLRLQRPHMVQ TLE
QYEFQYV VQEYIDAFSDYANFK

TRTRPLEQKLI SEEDLAANDILDYKDDDDKV

Tag:	C-Myc/DDK
Purity:	> 80% as determined by SDS-PAGE and Coomassie blue staining
Concentration:	>0.05 µg/µL as determined by microplate BCA method
Labeling Method:	Labeled with [U- ¹³ C ₆ , ¹⁵ N ₄]-L-Arginine and [U- ¹³ C ₆ , ¹⁵ N ₂]-L-Lysine
Buffer:	25 mM Tris-HCl, 100 mM glycine, pH 7.3
Storage:	Store at -80°C. Avoid repeated freeze-thaw cycles.
Stability:	Stable for 3 months from receipt of products under proper storage and handling conditions.
RefSeq:	NP_543031



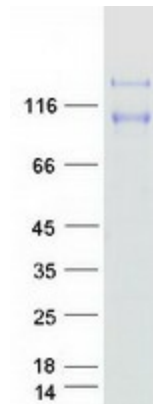
[View online »](#)

RefSeq Size:	3153
RefSeq ORF:	2379
Synonyms:	HEPTP; HLPR; HPTPA; HPTPalpha; LRP; PTPA; PTPRL2; R-PTP-alpha; RPTPA
Locus ID:	5786
UniProt ID:	P18433
Cytogenetics:	20p13

Summary: The protein encoded by this gene is a member of the protein tyrosine phosphatase (PTP) family. PTPs are known to be signaling molecules that regulate a variety of cellular processes including cell growth, differentiation, mitotic cycle, and oncogenic transformation. This PTP contains an extracellular domain, a single transmembrane segment and two tandem intracytoplasmic catalytic domains, and thus represents a receptor-type PTP. This PTP has been shown to dephosphorylate and activate Src family tyrosine kinases, and is implicated in the regulation of integrin signaling, cell adhesion and proliferation. Three alternatively spliced variants of this gene, which encode two distinct isoforms, have been reported. [provided by RefSeq, Jul 2008]

Protein Families: Druggable Genome, Phosphatase, Transmembrane

Product images:



Coomassie blue staining of purified PTPRA protein (Cat# [TP304392]). The protein was produced from HEK293T cells transfected with PTPRA cDNA clone (Cat# [RC204392]) using MegaTran 2.0 (Cat# [TT210002]).