

## Product datasheet for PH304391

### SLC2A6 (NM\_017585) Human Mass Spec Standard

#### Product data:

Product Type:	Mass Spec Standards
Description:	SLC2A6 MS Standard C13 and N15-labeled recombinant protein (NP_060055)
Species:	Human
Expression Host:	HEK293
Expression cDNA Clone or AA Sequence:	RC204391
Predicted MW:	54.5 kDa
Protein Sequence:	>RC204391 protein sequence Red=Cloning site Green=Tags(s)

MQEPLLGAEGPDYDTFPEKPPSPGDRARVGTLQNKRVFLATFAAVLGNFSFGYALVYTSPIPALERSL  
DPDLHLTKSQASWFGSVFTLGAAAGGLSAMILNDLLGRKLSIMFSAVPSAAGYALMAGAHGLWMLLLGRT  
LTGFAGGLTAACIPVYVSEIAPPGVRGALGATPQLMAVFGSLSLYALGLLLPWRWLAVAGEAPVLMILL  
LSFMPNSPRFLLSRGRDEEALRALAWLRGTDVDVHWEFEIQDNVRRQSSRVSWAEARAPHVCRPITVAL  
LMRLLQQLTGITPILVYLSIFDSTAVLLPPKDDAAIVGAVRLLSVLIAALTMDLAGRKVLLFVSAAIMF  
AANLTGLYIHFGRPLSPNSTAGLESESWGDLAQPLAAPAGYLTVPLLATMLFIMGYAVGWGPITWLL  
MSEVLPLRARGVASGLCVLASWLTAFVLTKSFLPVVSTFGLQVPFFFFAAICLVSLVFTGCCVPETKGRS  
LEQIESFFRTGRRSFLR

TRTRPLEQKLISEEDLAANDILDYKDDDDKV

Tag:	C-Myc/DDK
Purity:	> 80% as determined by SDS-PAGE and Coomassie blue staining
Concentration:	>0.05 µg/µL as determined by microplate BCA method
Labeling Method:	Labeled with [U- <sup>13</sup> C <sub>6</sub> , <sup>15</sup> N <sub>4</sub> ]-L-Arginine and [U- <sup>13</sup> C <sub>6</sub> , <sup>15</sup> N <sub>2</sub> ]-L-Lysine
Buffer:	25 mM Tris-HCl, 100 mM glycine, pH 7.3
Storage:	Store at -80°C. Avoid repeated freeze-thaw cycles.
Stability:	Stable for 3 months from receipt of products under proper storage and handling conditions.
RefSeq:	<u><a href="#">NP_060055</a></u>
RefSeq Size:	2563
RefSeq ORF:	1521



[View online »](#)

**Synonyms:** GLUT6; GLUT9; HSA011372

**Locus ID:** 11182

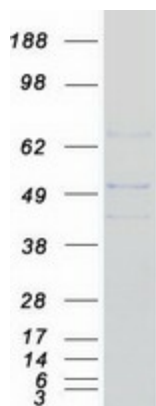
**UniProt ID:** [Q9UGQ3](#)

**Cytogenetics:** 9q34.2

**Summary:** Hexose transport into mammalian cells is catalyzed by a family of membrane proteins, including SLC2A6, that contain 12 transmembrane domains and a number of critical conserved residues.[supplied by OMIM, Jul 2002]

**Protein Families:** Transmembrane

### Product images:



Coomassie blue staining of purified SLC2A6 protein (Cat# [TP304391]). The protein was produced from HEK293T cells transfected with SLC2A6 cDNA clone (Cat# [RC204391]) using MegaTran 2.0 (Cat# [TT210002]).