

Product datasheet for PH304378

NIP30 (FAM192A) (NM_024946) Human Mass Spec Standard

Product data:

Product Type:	Mass Spec Standards
Description:	FAM192A MS Standard C13 and N15-labeled recombinant protein (NP_079222)
Species:	Human
Expression Host:	HEK293
Expression cDNA Clone or AA Sequence:	RC204378
Predicted MW:	28.9 kDa
Protein Sequence:	>RC204378 protein sequence Red=Cloning site Green=Tags(s) MDGGDDGNLI IKKRFVSE AELDERRKRRQEEWEKVRKPEDPEECPEEVYDPRSLYERLQEQKDRKQEQEYE EQFKFKNMVRGLDEDETNFLDEVSRQQELIEKQRREEELKELKEYRNNLKKVGI SQENKKEVEKCLTVKP IETKNKFSQAKLLAGAVKHKSSESGNSVKRLKPDPEPDDKNQEPSSCKSLGNTSLSGPSIHCPSAAVCIG ILPGLGAYSGSSDSESSDSEGTINATGKIVSSIFRTNTFLEAP TRTRPLEQKLI SEEDLAANDILDYKDDDDKV
Tag:	C-Myc/DDK
Purity:	> 80% as determined by SDS-PAGE and Coomassie blue staining
Concentration:	>0.05 µg/µL as determined by microplate BCA method
Labeling Method:	Labeled with [U- ¹³ C ₆ , ¹⁵ N ₄]-L-Arginine and [U- ¹³ C ₆ , ¹⁵ N ₂]-L-Lysine
Buffer:	25 mM Tris-HCl, 100 mM glycine, pH 7.3
Storage:	Store at -80°C. Avoid repeated freeze-thaw cycles.
Stability:	Stable for 3 months from receipt of products under proper storage and handling conditions.
RefSeq:	NP_079222
RefSeq Size:	2865
RefSeq ORF:	762
Synonyms:	C16orf94; CDA018; CDA10; FAM192A; NIP30; PIP30
Locus ID:	80011
UniProt ID:	Q9GZU8 , A0A024R6T8

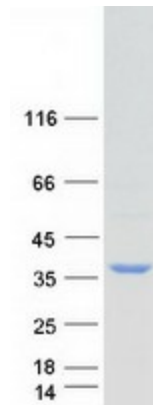


[View online »](#)

Cytogenetics: 16q13

Summary: Promotes the association of the proteasome activator complex subunit PSME3 with the 20S proteasome and regulates its activity. Inhibits PSME3-mediated degradation of some proteasome substrates, probably by affecting their diffusion rate into the catalytic chamber of the proteasome. Also inhibits the interaction of PSME3 with COIL, inhibits accumulation of PSME3 in Cajal bodies and positively regulates the number of Cajal bodies in the nucleus. [UniProtKB/Swiss-Prot Function]

Product images:



Coomassie blue staining of purified FAM192A protein (Cat# [TP304378]). The protein was produced from HEK293T cells transfected with FAM192A cDNA clone (Cat# [RC204378]) using MegaTran 2.0 (Cat# [TT210002]).