

## Product datasheet for PH304359

### LRR45 (NM\_144999) Human Mass Spec Standard

#### Product data:

|                                       |   |
|---------------------------------------|---|
| Product Type:                         | Mass Spec Standards   |
| Description:                          | LRR45 MS Standard C13 and N15-labeled recombinant protein (NP_659436) |
| Species:                              | Human   |
| Expression Host:                      | HEK293  |
| Expression cDNA Clone or AA Sequence: | RC204359  |
| Predicted MW:                         | 76 kDa  |
| Protein Sequence:                     | >RC204359 protein sequence<br>Red=Cloning site Green=Tags(s)          |

MEEFRRSYRSLCRESGAEPQEAVALQQLHQLPRGRDLATQSLTVETCRALGKLLPRETLCTELVLSDCML  
SEEGATLLLRGLCANTVLRFLDLKGNLRAAGAEALGKLLQQNKSIQSLTLEWNSLGTWDDAFATFCGGL  
AANGALQRLDLRNNQISHKGAEELALALKGNTTLQQLDLRWNNVGLLGGRALMNCLPSNRTLWRDLAGN  
NIPGDVLRAVEQAMGHSQDRLTTFQENQARTHVLSKEVQHLREEKSKQFLDLMETIDKQREEMAKSSRAS  
AARVGQLQEALNERHSIINALKAKLQMTAAALALSEQKAQDLGELLATAEQEQLSLSQRAKELKLEQQE  
AAERESKLLRDL SAANEKNLLLQNVDELERKFRQQEQLFQTRQEMTSMSAELKMRAIQAEERLDMCKR  
RCRQSLSESLRIKEVEHMTRHLEESEKAMQERVORLEAARLSLEEELSRVAAAALSERGQAEELIKA  
KSQARLEEQQRLAHLKLLLAQARDEAQAQGLQKQVVAEAQTRVSQLGLQVEGLRRRLEELQQELSL  
KDQERVAEYSRVVLELQEQNGRLQAELAAQEALREKAAALERQLKVMASDHREALLDRESENASLREKLR  
LREAEIARIRDEEAQRASFLQNAVLYVQASPVRTLSPPK

SGPTRTRPLEQKLI SEEDLAANDILDYKDDDDKV

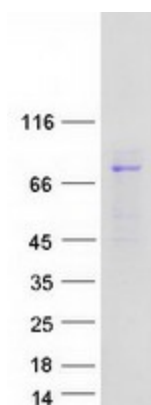
|                  |  |
|------------------|--|
| Tag:             | C-Myc/DDK  |
| Purity:          | > 80% as determined by SDS-PAGE and Coomassie blue staining                                |
| Concentration:   | >0.05 µg/µL as determined by microplate BCA method   |
| Labeling Method: | Labeled with [U- 13C6, 15N4]-L-Arginine and [U- 13C6, 15N2]-L-Lysine                       |
| Buffer:          | 25 mM Tris-HCl, 100 mM glycine, pH 7.3   |
| Storage:         | Store at -80°C. Avoid repeated freeze-thaw cycles.   |
| Stability:       | Stable for 3 months from receipt of products under proper storage and handling conditions. |
| RefSeq:          | <a href="#">NP_659436</a>  |
| RefSeq Size:     | 2639   |



[View online »](#)

|               |   |
|---------------|---|
| RefSeq ORF:   | 2010  |
| Locus ID:     | 201255  |
| UniProt ID:   | <a href="#">Q96CN5</a>  |
| Cytogenetics: | 17q25.3   |
| Summary:      | Component of the proteinaceous fiber-like linker between two centrioles, required for centrosome cohesion.[UniProtKB/Swiss-Prot Function] |

### Product images:



Coomassie blue staining of purified LRRC45 protein (Cat# [TP304359]). The protein was produced from HEK293T cells transfected with LRRC45 cDNA clone (Cat# [RC204359]) using MegaTran 2.0 (Cat# [TT210002]).