

Product datasheet for PH304358

TCP1 epsilon (CCT5) (NM_012073) Human Mass Spec Standard

Product data:

Product Type:	Mass Spec Standards
Description:	CCT5 MS Standard C13 and N15-labeled recombinant protein (NP_036205)
Species:	Human
Expression Host:	HEK293
Expression cDNA Clone or AA Sequence:	RC204358
Predicted MW:	59.7 kDa
Protein Sequence:	>Peptide sequence encoded by RC204358 Blue=ORF Red=Cloning site Green=Tag(s)

MASMGTLAFDEYGRPFLI IKDQDRKSRLMGLEALKSHIMAAKAVANTMRTSLGPNGLDKMMVDKGDVT
VTNDGATILSMDVDHQIAKLMVELSKSQDDEIGDGTGVVVLAGALLEEAEQLLDRIHPRIADGYE
QAARVAIEHLDKISDSVLVDIKDTEPLIQAKTTLGSKVNSCHRQMAEIAVNAVLTVADMERRDVF
LIKVEGKVGGRLEDTKL IKGVI VDKDFSHQMPKKVEDAKIAILTCPFEPKPKTKHKL DVTSVEDYKA
LQKYEKEKFEEMIQQIKETGANLAICQWGFDEANHLLQNNLPAVRWVGPEIELIAIATGGRIVPRF
SELTAEKLGFAGLVQEISFGTTKDKMLVIEQCKNSRAVTIFIRGGNKMIIEEAKRSLHDALCVIRNLIR
DNRVYVGGAAEISCALAVSQEADKCPTEQYAMRAFADALEVIPMALSENSGMNPIQTMTEVRARQVK
EMNPALGIDCLHKGTNDMKQHVIE TLIGKKQQISLATQMVRMILKIDDIRKPGSEEE
TRTRPLEQKLI SEEDLAANDILDYKDDDDKV

Recombinant protein using RC204358 also available, [TP304358M](#)

Tag:	C-Myc/DDK
Purity:	> 80% as determined by SDS-PAGE and Coomassie blue staining
Concentration:	>0.05 µg/µL as determined by microplate BCA method
Labeling Method:	Labeled with [U- ¹³ C ₆ , ¹⁵ N ₄]-L-Arginine and [U- ¹³ C ₆ , ¹⁵ N ₂]-L-Lysine
Buffer:	25 mM Tris-HCl, 100 mM glycine, pH 7.3
Storage:	Store at -80°C. Avoid repeated freeze-thaw cycles.
Stability:	Stable for 3 months from receipt of products under proper storage and handling conditions.
RefSeq:	NP_036205
RefSeq Size:	3403
RefSeq ORF:	1623



[View online »](#)

Synonyms: CCT-epsilon; CCTE; HEL-S-69; PNAS-102; TCP-1-epsilon

Locus ID: 22948

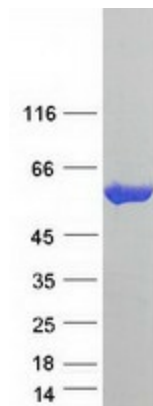
UniProt ID: [P48643](#), [V9HW37](#)

Cytogenetics: 5p15.2

Summary: The protein encoded by this gene is a molecular chaperone that is a member of the chaperonin containing TCP1 complex (CCT), also known as the TCP1 ring complex (TRiC). This complex consists of two identical stacked rings, each containing eight different proteins. Unfolded polypeptides enter the central cavity of the complex and are folded in an ATP-dependent manner. The complex folds various proteins, including actin and tubulin. Mutations in this gene cause hereditary sensory and autonomic neuropathy with spastic paraplegia (HSNSP). Alternative splicing results in multiple transcript variants. Related pseudogenes have been identified on chromosomes 5 and 13. [provided by RefSeq, Apr 2015]

Protein Families: Druggable Genome

Product images:



Coomassie blue staining of purified CCT5 protein (Cat# [TP304358]). The protein was produced from HEK293T cells transfected with CCT5 cDNA clone (Cat# [RC204358]) using MegaTran 2.0 (Cat# [TT210002]).