

## Product datasheet for PH304355

### CDC37L1 (NM\_017913) Human Mass Spec Standard

#### Product data:

Product Type:	Mass Spec Standards
Description:	CDC37L1 MS Standard C13 and N15-labeled recombinant protein (NP_060383)
Species:	Human
Expression Host:	HEK293
Expression cDNA Clone or AA Sequence:	RC204355
Predicted MW:	38.8 kDa
Protein Sequence:	>RC204355 protein sequence Red=Cloning site Green=Tags(s)  MEQPWPPPGWLSL PRAEGEAE EESDFD VFPSSPRCPQL PGGGAQMYSHGIELACQKQKEFKVSSVACKWN LAEAQKLGSLALHNSESLDQEHAQAQTAVSELQR EEEWRQKEEALVQREKMLWSTDAISKDVFNKSF INQDKRKDTEDEKSE SFMQKYEQKIRHFGMLSRWDDSQRF LSDHPYL VCEETAKYLILWCFHLEAEKKG ALMEQIAHQAVVMQFIMEMAKNCNVDPRGCFRLFQKAKAE EEGYFEAFKNELEAFKSRVRLYSQSQS FQ PMTVQNHVPHSGVGSIGLLES LQPNDYLQYSISTALCSLNSV VHKEDDEPKMMDTV  TRTRPLEQKLI SEEDLAANDILDYKDDDDKV
Tag:	C-Myc/DDK
Purity:	> 80% as determined by SDS-PAGE and Coomassie blue staining
Concentration:	>0.05 µg/µL as determined by microplate BCA method
Labeling Method:	Labeled with [U- <sup>13</sup> C <sub>6</sub> , <sup>15</sup> N <sub>4</sub> ]-L-Arginine and [U- <sup>13</sup> C <sub>6</sub> , <sup>15</sup> N <sub>2</sub> ]-L-Lysine
Buffer:	25 mM Tris-HCl, 100 mM glycine, pH 7.3
Storage:	Store at -80°C. Avoid repeated freeze-thaw cycles.
Stability:	Stable for 3 months from receipt of products under proper storage and handling conditions.
RefSeq:	<u><a href="#">NP_060383</a></u>
RefSeq Size:	1724
RefSeq ORF:	1011
Synonyms:	CDC37B; HARC
Locus ID:	55664



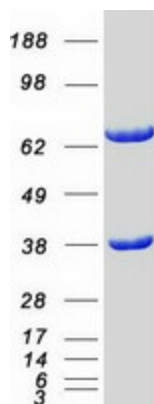
[View online »](#)

UniProt ID: [Q7L3B6](#)

Cytogenetics: 9p24.1

Summary: CDC37L1 is a cytoplasmic phosphoprotein that exists in complex with HSP90 (HSPCA; MIM 140571) as well as several other proteins involved in HSP90-mediated protein folding (Scholz et al., 2001 [PubMed 11413142]).[supplied by OMIM, Mar 2008]

### Product images:



Coomassie blue staining of purified CDC37L1 protein (Cat# [TP304355]). The protein was produced from HEK293T cells transfected with CDC37L1 cDNA clone (Cat# [RC204355]) using MegaTran 2.0 (Cat# [TT210002]).