

Product datasheet for PH304354

NT5C3L (NT5C3B) (NM_052935) Human Mass Spec Standard

Product data:

Product Type:	Mass Spec Standards
Description:	NT5C3L MS Standard C13 and N15-labeled recombinant protein (NP_443167)
Species:	Human
Expression Host:	HEK293
Expression cDNA Clone or AA Sequence:	RC204354
Predicted MW:	33.6 kDa
Protein Sequence:	>RC204354 protein sequence Red=Cloning site Green=Tags(s) MKATVLMRQPGRVQEIVGALRKGGDRLQVISDFMTLSRFAYNGKRCPPSSYNILDNSKIISEECKERLT ALLHHYYPIDPHRTVKEKLPHMVEWWTKAHLLCQKIQKFQIAQVVRESNAMLREGYKTFNTLYHN NIPLFIFSAGIGDILEEIIIRQMKVFHPNIHIVSNYMDFNEDGFLQGFKGQLIHTYKNSSVCENCYFQQ LEGKTNVILLGDSIGDLTMADGVPGVQNILKIGFLNDKVEERRERYMDSYDIVLEKDETLDDVNGLLQHI LCQGVQLEMQGP TRTRPLEQKLISEEDLAANDILDYKDDDDKV
Tag:	C-Myc/DDK
Purity:	> 80% as determined by SDS-PAGE and Coomassie blue staining
Concentration:	>0.05 µg/µL as determined by microplate BCA method
Labeling Method:	Labeled with [U- ¹³ C ₆ , ¹⁵ N ₄]-L-Arginine and [U- ¹³ C ₆ , ¹⁵ N ₂]-L-Lysine
Buffer:	25 mM Tris-HCl, 100 mM glycine, pH 7.3
Storage:	Store at -80°C. Avoid repeated freeze-thaw cycles.
Stability:	Stable for 3 months from receipt of products under proper storage and handling conditions.
RefSeq:	<u>NP_443167</u>
RefSeq Size:	1430
RefSeq ORF:	876
Synonyms:	cN-IIIB; NT5C3L
Locus ID:	115024

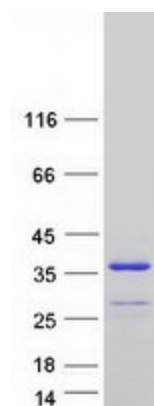

[View online »](#)

UniProt ID: [Q969T7](#)

Cytogenetics: 17q21.2

Summary: Specifically hydrolyzes 7-methylguanosine monophosphate (m(7)GMP) to 7-methylguanosine and inorganic phosphate (PubMed:23223233, PubMed:24603684). The specific activity for m(7)GMP may protect cells against undesired salvage of m(7)GMP and its incorporation into nucleic acids (PubMed:23223233). Also has weak activity for CMP (PubMed:23223233, PubMed:24603684). UMP and purine nucleotides are poor substrates (PubMed:23223233). [UniProtKB/Swiss-Prot Function]

Product images:



Coomassie blue staining of purified NT5C3B protein (Cat# [TP304354]). The protein was produced from HEK293T cells transfected with NT5C3B cDNA clone (Cat# [RC204354]) using MegaTran 2.0 (Cat# [TT210002]).