

Product datasheet for PH304348

CTHRC1 (NM_138455) Human Mass Spec Standard

Product data:

Product Type:	Mass Spec Standards
Description:	CTHRC1 MS Standard C13 and N15-labeled recombinant protein (NP_612464)
Species:	Human
Expression Host:	HEK293
Expression cDNA Clone or AA Sequence:	RC204348
Predicted MW:	26.2 kDa
Protein Sequence:	>RC204348 protein sequence Red=Cloning site Green=Tags(s) MRPQGPAASPQRLRGLLLLLLLQLPAPSSASEIPKGGKQKAQLRQREVVDLYNGMCLQGPAGVPRDGGSPG ANGIPGTPGIPGRDGFKEGKECLRESFEEESWTPNYKQCSWSSLNYGIDLKIAECTFTKMRSNSALRVL FSGSLRLKCRNACCQRWYFTFNGAECGSLPIEAIYLDQGSPEMNSTINIHRTSSVEGLCEGIGAGLVD VAIWWGTCSDYPKGDASTGWNSVSRIIEELPK TRTRPLEQKLISEEDLAANDILDYKDDDDKV
Tag:	C-Myc/DDK
Purity:	> 80% as determined by SDS-PAGE and Coomassie blue staining
Concentration:	>0.05 µg/µL as determined by microplate BCA method
Labeling Method:	Labeled with [U- 13C6, 15N4]-L-Arginine and [U- 13C6, 15N2]-L-Lysine
Buffer:	25 mM Tris-HCl, 100 mM glycine, pH 7.3
Storage:	Store at -80°C. Avoid repeated freeze-thaw cycles.
Stability:	Stable for 3 months from receipt of products under proper storage and handling conditions.
RefSeq:	NP_612464
RefSeq Size:	1279
RefSeq ORF:	729
Locus ID:	115908
UniProt ID:	Q96CG8
Cytogenetics:	8q22.3

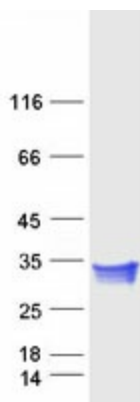


[View online »](#)

Summary: This locus encodes a protein that may play a role in the cellular response to arterial injury through involvement in vascular remodeling. Mutations at this locus have been associated with Barrett esophagus and esophageal adenocarcinoma. Alternatively spliced transcript variants have been described. [provided by RefSeq, Jan 2012]

Protein Families: Secreted Protein

Product images:



Coomassie blue staining of purified CTHRC1 protein (Cat# [TP304348]). The protein was produced from HEK293T cells transfected with CTHRC1 cDNA clone (Cat# [RC204348]) using MegaTran 2.0 (Cat# [TT210002]).