

Product datasheet for PH304347

Syntaxin 16 (STX16) (NM_003763) Human Mass Spec Standard

Product data:

Product Type:	Mass Spec Standards
Description:	STX16 MS Standard C13 and N15-labeled recombinant protein (NP_003754)
Species:	Human
Expression Host:	HEK293
Expression cDNA Clone or AA Sequence:	RC204347
Predicted MW:	34.8 kDa
Protein Sequence:	>RC204347 protein sequence Red=Cloning site Green=Tags(s)

MATRRLTDAFLLLRNNSIQNRQLLAEQLADDRMALVSGISLDPEAAIGVTKRPPPKWVDGVDEIQYDVGR
IKQMKELASLHDKHLNRPTLDDSSSEEHAIEITTQEITQLFHRCQRAVQALPSRARACSEQEGRLGNV
VASLAQALQELSTFRHAQSGYLKRMKNREERSQHFFDTSVPLMDDGDDNTLYHRGFTEDQLVLEQNTL
MVEEREREIRQIVQSISDLNEIFRDLGAMIVEQGTVLDRIDYNVEQSCIKTEDGLKQLHKAQYQKKNRK
MLVILILFVIIIVLIVLVGVKSR

TRTRPLEQKLISEEDLAANDILDYKDDDDKV

Tag:	C-Myc/DDK
Purity:	> 80% as determined by SDS-PAGE and Coomassie blue staining
Concentration:	>0.05 µg/µL as determined by microplate BCA method
Labeling Method:	Labeled with [U- ¹³ C ₆ , ¹⁵ N ₄]-L-Arginine and [U- ¹³ C ₆ , ¹⁵ N ₂]-L-Lysine
Buffer:	25 mM Tris-HCl, 100 mM glycine, pH 7.3
Storage:	Store at -80°C. Avoid repeated freeze-thaw cycles.
Stability:	Stable for 3 months from receipt of products under proper storage and handling conditions.
RefSeq:	<u>NP_003754</u>
RefSeq Size:	4915
RefSeq ORF:	912
Synonyms:	SYN16
Locus ID:	8675



[View online »](#)

UniProt ID: [O14662](#), [O14662-2](#)

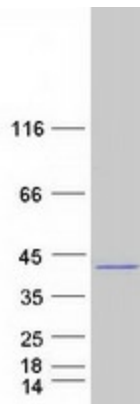
Cytogenetics: 20q13.32

Summary: This gene encodes a protein that is a member of the syntaxin or t-SNARE (target-SNAP receptor) family. These proteins are found on cell membranes and serve as the targets for V-SNARES (vesicle-SNAP receptors) permitting specific synaptic vesicle docking and fusion. A microdeletion in the region of chromosome 20 where this gene is located has been associated with pseudohypoparathyroidism type 1b. Multiple transcript variants have been found for this gene. Read-through transcription also exists between this gene and the neighboring downstream aminopeptidase-like 1 (NPEPL1) gene. [provided by RefSeq, Mar 2011]

Protein Families: Druggable Genome, Transmembrane

Protein Pathways: SNARE interactions in vesicular transport

Product images:



Coomassie blue staining of purified STX16 protein (Cat# [TP304347]). The protein was produced from HEK293T cells transfected with STX16 cDNA clone (Cat# [RC204347]) using MegaTran 2.0 (Cat# [TT210002]).