

Product datasheet for PH304342

ARH3 (ADPRHL2) (NM_017825) Human Mass Spec Standard

Product data:

Product Type:	Mass Spec Standards
Description:	ADPRHL2 MS Standard C13 and N15-labeled recombinant protein (NP_060295)
Species:	Human
Expression Host:	HEK293
Expression cDNA Clone or AA Sequence:	RC204342
Predicted MW:	38.9 kDa
Protein Sequence:	>RC204342 protein sequence Red=Cloning site Green=Tags(s)
	<p>MAAAAMAAAGGGAGAARSLSRFRGCLAGALLGDCVGSFYEAHDTVDLTSVLRHVQSLEPDPGTPGSERT EALYYTDDTAMARALVQSLLAKEAFDEVDMAHRFAQEYKQDPDRGYGAGVTVFKLLNPKCRDVFEPAR AQFNGKGSYNGGAMRVAGISLAYSSVQDVQKFARLSAQLTHASSLGYNGAILQALAVHLALQGESSSEH FLKQLLGHMEDLEGDAQSVLDARELGMEERPYSRLKIGELLDQASVTREEVVSELGNGIAAFESVPTA IYCFRLRCMEPDPEIPSAFNSLQRTLIIYSISLGGDTDTIATMAGAIAGAYYGMDQVPESWQQSCEGYEETD ILAQSLHRVQKS</p> <p>TRTRPLEQKLISEEDLAANDILDYKDDDDKV</p>
Tag:	C-Myc/DDK
Purity:	> 80% as determined by SDS-PAGE and Coomassie blue staining
Concentration:	>0.05 µg/µL as determined by microplate BCA method
Labeling Method:	Labeled with [U- ¹³ C ₆ , ¹⁵ N ₄]-L-Arginine and [U- ¹³ C ₆ , ¹⁵ N ₂]-L-Lysine
Buffer:	25 mM Tris-HCl, 100 mM glycine, pH 7.3
Storage:	Store at -80°C. Avoid repeated freeze-thaw cycles.
Stability:	Stable for 3 months from receipt of products under proper storage and handling conditions.
RefSeq:	<u>NP_060295</u>
RefSeq Size:	1701
RefSeq ORF:	1089
Synonyms:	ADPRHL2; ARH3; CONDSIAS
Locus ID:	54936



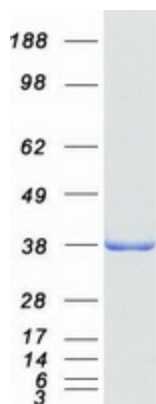
[View online »](#)

UniProt ID: [Q9NX46](#)

Cytogenetics: 1p34.3

Summary: This gene encodes a member of the ADP-ribosylglycohydrolase family. The encoded enzyme catalyzes the removal of ADP-ribose from ADP-ribosylated proteins. This enzyme localizes to the mitochondria, in addition to the nucleus and cytoplasm.[provided by RefSeq, Feb 2009]

Product images:



Coomassie blue staining of purified ADPRHL2 protein (Cat# [TP304342]). The protein was produced from HEK293T cells transfected with ADPRHL2 cDNA clone (Cat# [RC204342]) using MegaTran 2.0 (Cat# [TT210002]).