

Product datasheet for PH304339

GCC1 (NM_024523) Human Mass Spec Standard

Product data:

Product Type:	Mass Spec Standards
Description:	GCC1 MS Standard C13 and N15-labeled recombinant protein (NP_078799)
Species:	Human
Expression Host:	HEK293
Expression cDNA Clone or AA Sequence:	RC204339
Predicted MW:	87.8 kDa
Protein Sequence:	>RC204339 protein sequence Red=Cloning site Green=Tags(s)

MEKFGMNFGGGPKKDLLLETIETQKKQLLQYQARLKDVVRAYKSLLEKEALEASIKVLSVSHEADVGLA
GVQLPGLTFPDSVDDRCSTHSEDSTGTATSLDTAASLTSTKGEFVEDDRPARGPPPKSEEASWSESGV
SSSSGDGPFAGGEVDKRLHQLKTQLATLSSLATVTQEKSMEASYLADKKMKQDLEDASNKAEERAR
LEGELKGLQEQAETKARLITQQHDRAQEQSDHALMLRELQKLLQEERTQRQDLELRELETREALAGRAY
AAEQMEGFELQTKQLTREVEELKSELQAIRDEKNQDPRLQELQEEAARLKSHFQAQLQEQEMRKTALAED
QLRQSQVEEQRVAALENQISEVSELLGTYEKAKQKQDLAIQKLERILQLDLENKTLALAASSRSPLDS
HGEESLQVNVLDKMEKLRLLQVAARKSQVTLQVLEKLDLEIMPSSAADGEKATALYYQELKQLKE
EFERYKMRAQVVLKSKNTKDGNLGKELEAAQEQLAELKEKYISLRLSCEELEHQHQEQEADDWKQELARLQ
QLHRQELERCQLDFRDTLQLEELHKQRDRALAVLQTEKLELEQLRSVALASGLPGRRSPVGGGGPGDP
ADTSSDSLQALQLAAANEPTFFLYAEQLARKEVEITSLRKQKHRLVEVHQLQDRLLEEGERHREEVA
ALQSHIEKNIRDQSREGANLEYLKNIIYRFLTLPSDLGRQQLTAILTILHFSPEEKQVIMRLPTSASWW
PSGKR

TRTRPLEQKLISEEDLAANDILDYKDDDDKV

Tag:	C-Myc/DDK
Purity:	> 80% as determined by SDS-PAGE and Coomassie blue staining
Concentration:	>0.05 µg/µL as determined by microplate BCA method
Labeling Method:	Labeled with [U- ¹³ C ₆ , ¹⁵ N ₄]-L-Arginine and [U- ¹³ C ₆ , ¹⁵ N ₂]-L-Lysine
Buffer:	25 mM Tris-HCl, 100 mM glycine, pH 7.3
Storage:	Store at -80°C. Avoid repeated freeze-thaw cycles.
Stability:	Stable for 3 months from receipt of products under proper storage and handling conditions.
RefSeq:	<u>NP_078799</u>

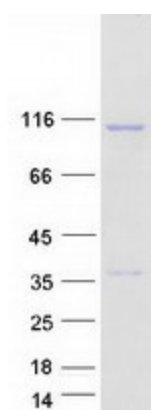


[View online >](#)

RefSeq Size: 4152
RefSeq ORF: 2325
Synonyms: GCC1P; GCC88
Locus ID: 79571
UniProt ID: [Q96CN9](#), [A4D0Z4](#)
Cytogenetics: 7q32.1

Summary: The protein encoded by this gene is a peripheral membrane protein. It is sensitive to brefeldin A. This encoded protein contains a GRIP domain which is thought to be used in targeting. It may play a role in the organization of trans-Golgi network subcompartment involved with membrane transport. [provided by RefSeq, Jul 2008]

Product images:



Coomassie blue staining of purified GCC1 protein (Cat# [TP304339]). The protein was produced from HEK293T cells transfected with GCC1 cDNA clone (Cat# [RC204339]) using MegaTran 2.0 (Cat# [TT210002]).