

Product datasheet for PH304333

UPF3A (NM_080687) Human Mass Spec Standard

Product data:

Product Type:	Mass Spec Standards
Description:	UPF3A MS Standard C13 and N15-labeled recombinant protein (NP_542418)
Species:	Human
Expression Host:	HEK293
Expression cDNA Clone or AA Sequence:	RC204333
Predicted MW:	51 kDa
Protein Sequence:	>RC204333 protein sequence Red =Cloning site Green =Tags(s)

MRSEKEGAGGLRAAVAARGPSGREKLSALEVQFHRDSQQQEAEPTPTSSSGCGGGAGKPREEKRTALSKV
 VIRRLPPGLTKEQLEELRPLPAHDYFEFFAADLSLYPHLYSRAYINFRNPDDILLFRDRFDGYIFLDSK
 DPEYKKFLETYCVEEKTSANPETLLGEMAEKTRIELIARRTTPLLEYIKNRKLEKQRIREEKREERRRRE
 LEKKRLREEEKRRRREEERCKKEDTKQKIAEKEVRIKLLKKPEKGEEPTTEKPKERGEEDTGGGKQE
 SCAPGAVVKARPMEGSLEEPQETSHSGSDKEHRDVERSQQESEAQRYHVDGRRHRAHHEPERLSRRSE
 DEQRWGKGPQDRGKKSQDSGAPGEAMERLGRAQRCDDSPAPRKERLANKDRPALQLYDPGARFRAREC
 GGNRRICKAEGSGTGPEKREEAE

TRTRPLEQKLISEEDLAANDILDYKDDDDKV

Tag:	C-Myc/DDK
Purity:	> 80% as determined by SDS-PAGE and Coomassie blue staining
Concentration:	>0.05 µg/µL as determined by microplate BCA method
Labeling Method:	Labeled with [U- ¹³ C ₆ , ¹⁵ N ₄]-L-Arginine and [U- ¹³ C ₆ , ¹⁵ N ₂]-L-Lysine
Buffer:	25 mM Tris-HCl, 100 mM glycine, pH 7.3
Storage:	Store at -80°C. Avoid repeated freeze-thaw cycles.
Stability:	Stable for 3 months from receipt of products under proper storage and handling conditions.
RefSeq:	<u>NP_542418</u>
RefSeq Size:	2303
RefSeq ORF:	1329
Synonyms:	HUPF3A; RENT3A; UPF3


[View online »](#)

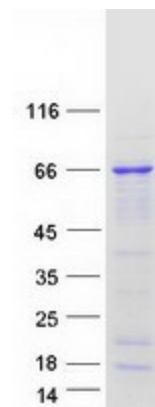
Locus ID: 65110

UniProt ID: [Q9H1J1](#)

Cytogenetics: 13q34

Summary: This gene encodes a protein that is part of a post-splicing multiprotein complex involved in both mRNA nuclear export and mRNA surveillance. The encoded protein is one of two functional homologs to yeast Upf3p. mRNA surveillance detects exported mRNAs with truncated open reading frames and initiates nonsense-mediated mRNA decay (NMD). When translation ends upstream from the last exon-exon junction, this triggers NMD to degrade mRNAs containing premature stop codons. This protein binds to the mRNA and remains bound after nuclear export, acting as a nucleocytoplasmic shuttling protein. It forms with Y14 a complex that binds specifically 20 nt upstream of exon-exon junctions. This gene is located on the long arm of chromosome 13. Several splice variants encoding different isoforms have been found for this gene. [provided by RefSeq, Jul 2017]

Product images:



Coomassie blue staining of purified UPF3A protein (Cat# [TP304333]). The protein was produced from HEK293T cells transfected with UPF3A cDNA clone (Cat# [RC204333]) using MegaTran 2.0 (Cat# [TT210002]).