

Product datasheet for PH304330

Alkaline Phosphatase (ALPPL2) (NM_031313) Human Mass Spec Standard

Product data:

Product Type:	Mass Spec Standards
Description:	ALPPL2 MS Standard C13 and N15-labeled recombinant protein (NP_112603)
Species:	Human
Expression Host:	HEK293
Expression cDNA Clone or AA Sequence:	RC204330
Predicted MW:	55.2 kDa
Protein Sequence:	>RC204330 representing NM_031313 Red=Cloning site Green=Tags(s)

MQGPWVLLLLGLRLQLSLGIIPVEEENPDFWNRQAAEALGAAKKLQPAQTAANKLIIFLGDGMGVSTVTA
ARILKQGKDKLGPETFLAMDRFPYVALSKTYSVDKHPDVGATATAYLCGVKGNFQTIGLSAAARFNQC
NTTRGNEVISVVRNRAKKAGKSVGVVTTTRVQHASPAGTYAHTVNRNWYSADVPASARQEGCQDIATQLI
SNMDIDVILGGGRKYMFMGTPDPEYDDYSQGGTRLGKNLVQEWLAKHQGARYVWNRTELLQASLDPS
VTHLMGLFEPGDMKYEIHRDSTLDPSLMEMTEAALRLLSRNPRGFFLFVEGGRIDHGHESRAYRALTET
IMFDDAIERAGQLTSEEDTSLVTADHSHVFSFGGYPLRGSSIFGLAPGKARDRKAYTVLLYGNPGYVL
KDGARPDVTESESGSPEYRQQSAVPLDGETHAGEDVAVFARGPQAHLVHGVQEQTFAHVMAFAACLEPY
TACDLAPPAGTTDAAHPGPSVVPALLPLLAGTLLLLGTATAP

TRTRPLEQKLISEEDLAANDILDYKDDDDKV

Tag:	C-Myc/DDK
Purity:	> 80% as determined by SDS-PAGE and Coomassie blue staining
Concentration:	>0.05 µg/µL as determined by microplate BCA method
Labeling Method:	Labeled with [U- ¹³ C ₆ , ¹⁵ N ₄]-L-Arginine and [U- ¹³ C ₆ , ¹⁵ N ₂]-L-Lysine
Buffer:	25 mM Tris-HCl, 100 mM glycine, pH 7.3
Storage:	Store at -80°C. Avoid repeated freeze-thaw cycles.
Stability:	Stable for 3 months from receipt of products under proper storage and handling conditions.
RefSeq:	NP_112603
RefSeq Size:	2485
RefSeq ORF:	1596



[View online »](#)

Synonyms: ALPPL; ALPPL2; GCAP

Locus ID: 251

UniProt ID: [P10696](#)

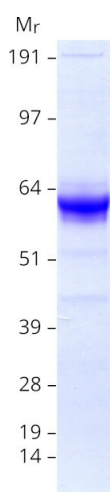
Cytogenetics: 2q37.1

Summary: There are at least four distinct but related alkaline phosphatases: intestinal, placental, placental-like, and liver/bone/kidney (tissue non-specific). The product of this gene is a membrane bound glycosylated enzyme, localized to testis, thymus and certain germ cell tumors, that is closely related to both the placental and intestinal forms of alkaline phosphatase. [provided by RefSeq, Jul 2008]

Protein Families: Druggable Genome

Protein Pathways: Folate biosynthesis, Metabolic pathways

Product images:



Coomassie blue staining of purified ALPG protein (Cat# [TP304330]). The protein was produced from HEK293T cells transfected with ALPG cDNA clone (Cat# [RC204330]) using MegaTran 2.0 (Cat# [TT210002]).