

Product datasheet for PH304329

MRPL19 (NM_014763) Human Mass Spec Standard

Product data:

Product Type:	Mass Spec Standards
Description:	MRPL19 MS Standard C13 and N15-labeled recombinant protein (NP_055578)
Species:	Human
Expression Host:	HEK293
Expression cDNA Clone or AA Sequence:	RC204329
Predicted MW:	33.5 kDa
Protein Sequence:	>RC204329 protein sequence Red=Cloning site Green=Tags(s)

MAACIAAGHWAAMGLGRSFQAARTLLPPPASIAACRVHAGPVRQQSTGPSEPGAFQPPPKPVIVDKHRPVE
PERRFLSPEFIPRRGRDPLKQIERKDMLEERRKVLHIPEFYVGSILRVTTADPYASGKISQFLGICIQR
SGRGLGATFILRNVEGQGV EICFELYNPRVQEIQVVKLEKRLDSSLLYLRDALPEYSTFDVNMKPVVQE
PNQKVVPVNELKVKMKPKPWSKRWERPNFNKIRFDLCLTEQQMKEAQKWNQPWLEFDMREYDTSKIEA
AIWKEIEASKRS

TRTRPLEQKLI SEEDLAANDILDYKDDDDKV

Tag:	C-Myc/DDK
Purity:	> 80% as determined by SDS-PAGE and Coomassie blue staining
Concentration:	>0.05 µg/µL as determined by microplate BCA method
Labeling Method:	Labeled with [U- ¹³ C ₆ , ¹⁵ N ₄]-L-Arginine and [U- ¹³ C ₆ , ¹⁵ N ₂]-L-Lysine
Buffer:	25 mM Tris-HCl, 100 mM glycine, pH 7.3
Storage:	Store at -80°C. Avoid repeated freeze-thaw cycles.
Stability:	Stable for 3 months from receipt of products under proper storage and handling conditions.
RefSeq:	<u>NP_055578</u>
RefSeq Size:	7827
RefSeq ORF:	876
Synonyms:	L19mt; MRP-L15; MRP-L19; MRPL15; RLX1; RPML15
Locus ID:	9801



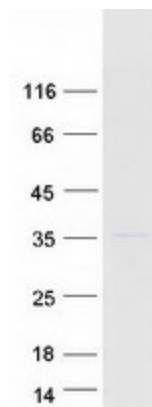
[View online »](#)

UniProt ID: [P49406](#)

Cytogenetics: 2p12

Summary: Mammalian mitochondrial ribosomal proteins are encoded by nuclear genes and help in protein synthesis within the mitochondrion. Mitochondrial ribosomes (mitoribosomes) consist of a small 28S subunit and a large 39S subunit. They have an estimated 75% protein to rRNA composition compared to prokaryotic ribosomes, where this ratio is reversed. Another difference between mammalian mitoribosomes and prokaryotic ribosomes is that the latter contain a 5S rRNA. Among different species, the proteins comprising the mitoribosome differ greatly in sequence, and sometimes in biochemical properties, which prevents easy recognition by sequence homology. This gene encodes a 39S subunit protein. [provided by RefSeq, Jul 2008]

Product images:



Coomassie blue staining of purified MRPL19 protein (Cat# [TP304329]). The protein was produced from HEK293T cells transfected with MRPL19 cDNA clone (Cat# [RC204329]) using MegaTran 2.0 (Cat# [TT210002]).