

Product datasheet for PH304326

CRLF3 (NM_015986) Human Mass Spec Standard

Product data:

Product Type:	Mass Spec Standards
Description:	CRLF3 MS Standard C13 and N15-labeled recombinant protein (NP_057070)
Species:	Human
Expression Host:	HEK293
Expression cDNA Clone or AA Sequence:	RC204326
Predicted MW:	49.8 kDa
Protein Sequence:	>RC204326 protein sequence Red=Cloning site Green=Tags(s)

MRGAMELEPELLLQEARENVEAAQSYRRELGHRLEGLREARRQIKESASQTRDVLKQHFNDLKGTGKLL
DERLVTLLQEVDTIETIKPLDDCQKLIHGVNTAEDLVREGEIAMLGGVGEENEKLSFTHKASHIQL
DSLPEVPLLVDPCLSAQLDDSIILNIVKDHIFKHGTVASRPPVQIEELIEKPGGIIVRWCKVDDDFTAQD
YRLQFRKCTSNHFEDVYVGSETEFIVLHIDPNVDYQFRVCARGDGRQEWSPWSVPQIGHSTLVPHEWTAG
FEGYSLSSRRNIALRNDESSGVLYSRPTYFCGQTLTFRVETVGQPPRRDSIGVCAEKQDGYDSLQRDQ
AVCISTNGAVFVNGKEMTNQLPAVTSGSTVTFDIEAVTLGTTSNNEGHHFKLRVTISSNNREVVFDWLLD
QSCGSLYFGCSFFYPGWKVLVF

TRTRPLEQKLISEEDLAANDILDYKDDDDKV

Tag:	C-Myc/DDK
Purity:	> 80% as determined by SDS-PAGE and Coomassie blue staining
Concentration:	>0.05 µg/µL as determined by microplate BCA method
Labeling Method:	Labeled with [U- ¹³ C ₆ , ¹⁵ N ₄]-L-Arginine and [U- ¹³ C ₆ , ¹⁵ N ₂]-L-Lysine
Buffer:	25 mM Tris-HCl, 100 mM glycine, pH 7.3
Storage:	Store at -80°C. Avoid repeated freeze-thaw cycles.
Stability:	Stable for 3 months from receipt of products under proper storage and handling conditions.
RefSeq:	<u>NP_057070</u>
RefSeq Size:	2954
RefSeq ORF:	1326
Synonyms:	CREME-9; CREME9; CRLM9; CYTOR4; FRWS; p48.2



[View online »](#)

Locus ID: 51379

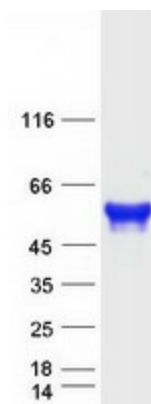
UniProt ID: [Q8IUJ8](#)

Cytogenetics: 17q11.2

Summary: This gene encodes a cytokine receptor-like factor that may negatively regulate cell cycle progression at the G0/G1 phase. Studies of the related rat protein suggest that it may regulate neuronal morphology and synaptic vesicle biogenesis. This gene is one of several genes located in the neurofibromatosis type I tumor suppressor region on the q arm of chromosome 17, a region that is subject to microdeletions, duplications, chromosomal breaks and rearrangements. Alternative splicing of this gene results in multiple transcript variants. Related pseudogenes have been identified on chromosomes 2 and 5. [provided by RefSeq, Aug 2012]

Protein Families: Druggable Genome

Product images:



Coomassie blue staining of purified CRLF3 protein (Cat# [TP304326]). The protein was produced from HEK293T cells transfected with CRLF3 cDNA clone (Cat# [RC204326]) using MegaTran 2.0 (Cat# [TT210002]).