

## Product datasheet for PH304323

### HuC (ELAVL3) (NM\_001420) Human Mass Spec Standard

#### Product data:

Product Type:	Mass Spec Standards
Description:	ELAVL3 MS Standard C13 and N15-labeled recombinant protein (NP_001411)
Species:	Human
Expression Host:	HEK293
Expression cDNA Clone or AA Sequence:	RC204323
Predicted MW:	39.4 kDa
Protein Sequence:	>RC204323 representing NM_001420 Red=Cloning site Green=Tags(s)  MVTQILGAMESQVGGGPAGPALPNGPLLGTNGATDDSKTNLIVNYLPQNMTQDEFKSLFGSIGDIESCKL VRDKITGQSLGYGFVNYSDPNADKAINLNLGLKLTQTKTIKVSYPSSASIRDANLYVSGLPKTMSSQKE MEQLFSQYGRIITSRILVDQVTGVSARGVGFIRFDKRIEAEAAIKGLNGQKPLGAAEPITVKFANNPSQKT GQALLTHLYQSSARRYAGPLHHQTQRFRLDNLNLMAYGVKSPLSLIARFSPIAIDGMSGLAGVLSGGAA GAGWCIFVYNLSPEADESVLWQLFGPFGAVTNVKVIRDFTTNKCKGFGFVTMTNYDEAAMAIASLNGYRL GERVLQVSFKTSKQHKA  TRTRPLEQKLI SEEDLAANDILDYKDDDDKV
Tag:	C-Myc/DDK
Purity:	> 80% as determined by SDS-PAGE and Coomassie blue staining
Concentration:	>0.05 µg/µL as determined by microplate BCA method
Labeling Method:	Labeled with [U- <sup>13</sup> C <sub>6</sub> , <sup>15</sup> N <sub>4</sub> ]-L-Arginine and [U- <sup>13</sup> C <sub>6</sub> , <sup>15</sup> N <sub>2</sub> ]-L-Lysine
Buffer:	25 mM Tris-HCl, 100 mM glycine, pH 7.3
Storage:	Store at -80°C. Avoid repeated freeze-thaw cycles.
Stability:	Stable for 3 months from receipt of products under proper storage and handling conditions.
RefSeq:	<u>NP_001411</u>
RefSeq Size:	4682
RefSeq ORF:	1101
Synonyms:	HUC; HUCL; PLE21
Locus ID:	1995



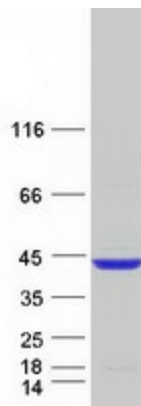
[View online »](#)

UniProt ID: [Q14576](#)

Cytogenetics: 19p13.2

**Summary:** A member of the ELAVL protein family, ELAV-like 3 is a neural-specific RNA-binding protein which contains three RNP-type RNA recognition motifs. The observation that ELAVL3 is one of several Hu antigens (neuronal-specific RNA-binding proteins) recognized by the anti-Hu serum antibody present in sera from patients with paraneoplastic encephalomyelitis and sensory neuronopathy (PEM/PSN) suggests it has a role in neurogenesis. Two alternatively spliced transcript variants encoding distinct isoforms have been found for this gene. [provided by RefSeq, Jul 2008]

### Product images:



Coomassie blue staining of purified ELAVL3 protein (Cat# [TP304323]). The protein was produced from HEK293T cells transfected with ELAVL3 cDNA clone (Cat# [RC204323]) using MegaTran 2.0 (Cat# [TT210002]).