

## Product datasheet for PH304322

### MALT1 (NM\_173844) Human Mass Spec Standard

#### Product data:

Product Type:	Mass Spec Standards
Description:	MALT1 MS Standard C13 and N15-labeled recombinant protein (NP_776216)
Species:	Human
Expression Host:	HEK293
Expression cDNA Clone or AA Sequence:	RC204322
Predicted MW:	90.9 kDa
Protein Sequence:	>RC204322 representing NM_173844 Red=Cloning site Green=Tags(s)

MSLLGDPLQALPPSAAPTGPLLAPPAGATLNRLREPLLRRLSELLDQAPEGRGWRRLAELAGSRGRLRLS  
CLDLEQCCKVLEPEGSPSLCLLKLMEKGGCTVTELSDFLQAMEHTEVLQLLSPPGKIKITVNPESKAVLA  
GQFVKLCCRATGHPFVQYQWFKMKEIPNGNTSELIFNAVHVKDAGFYVCRVNNNFTEFSQWSQLDVCD  
IPESFQRSVDGVSESKLQICVEPTSQKLMGSLVLCVAVGSPIPHYQWFKNELPLTHETKLYMVPYV  
DLEHQGTYWCHVYNDRDSQDSKKVEIIDELENNLGHDPNKEQTTDQPLAKDKVALLIGNMNYREHPKKA  
PLVDVYELTNLLRQLDFKVVSLDLTEYEMRNAVDEFLLLLDKGVYGLLYYAGHGYENFGNSFMVPVDAP  
NPYRSENCVCVQILKLMQEKETGLNVFLLDMCRKRNDYDDTIPILDALKVTANIVFGYATCQGAEAFEI  
QHSGLANGIFMKFLKDRLLLEDKKITVLLDEVAEDMGKCHLTKGKQALEIRSSLSEKRALTDPIQGTSEYSA  
ESLVRNLQWAKAHELPEMCKLFCGQVQIQLGFAAEFSNMVMIITYTSIVYKPEIIMCDAYVTFPLDLDI  
DPKDANKGTPEETGSYLVSKDLPKHCLYTRLSSLQKLKEHLVFTVCLSYQYSGLEDTVEDKQEVNNGKPL  
IAKLDMRGLGRKTCFQTCCLMSNGPYQSSAATSGGAGHYHSLQDPFHGVYHSHPGNPSNVTADSCHCSR  
TPDAFISSFAHHSCHFSRSNVPVETTDEIPFSFSDRLRISEK

TRTRPLEQKLISEEDLAANDILDYKDDDDKV

Tag:	C-Myc/DDK
Purity:	> 80% as determined by SDS-PAGE and Coomassie blue staining
Concentration:	>0.05 µg/µL as determined by microplate BCA method
Labeling Method:	Labeled with [U- <sup>13</sup> C <sub>6</sub> , <sup>15</sup> N <sub>4</sub> ]-L-Arginine and [U- <sup>13</sup> C <sub>6</sub> , <sup>15</sup> N <sub>2</sub> ]-L-Lysine
Buffer:	25 mM Tris-HCl, 100 mM glycine, pH 7.3
Storage:	Store at -80°C. Avoid repeated freeze-thaw cycles.
Stability:	Stable for 3 months from receipt of products under proper storage and handling conditions.
RefSeq:	<a href="#">NP_776216</a>



[View online »](#)

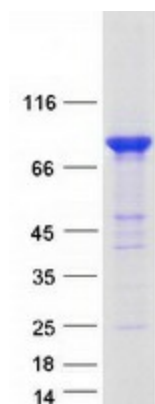
RefSeq Size:	4996
RefSeq ORF:	2439
Synonyms:	IMD12; MLT; MLT1; PCASP1
Locus ID:	10892
UniProt ID:	<a href="#">Q9UDY8</a> , <a href="#">A8K5S1</a>
Cytogenetics:	18q21.32

**Summary:** This gene encodes a caspase-like protease that plays a role in BCL10-induced activation of NF-kappaB. The protein is a component of the CARMA1-BCL10-MALT1 (CBM) signalosome that triggers NF-kappaB signaling and lymphocyte activation following antigen-receptor stimulation. Mutations in this gene result in immunodeficiency 12 (IMD12). This gene has been found to be recurrently rearranged in chromosomal translocations with other genes in mucosa-associated lymphoid tissue lymphomas, including a t(11;18)(q21;q21) translocation with the baculoviral IAP repeat-containing protein 3 (also known as apoptosis inhibitor 2) locus [BIRC3(API2)-MALT1], and a t(14;18)(q32;q21) translocation with the immunoglobulin heavy chain locus (IGH-MALT1). Alternatively spliced transcript variants have been described for this gene. [provided by RefSeq, May 2018]

**Protein Families:** Druggable Genome, Protease

**Protein Pathways:** B cell receptor signaling pathway, T cell receptor signaling pathway

### Product images:



Coomassie blue staining of purified MALT1 protein (Cat# [TP304322]). The protein was produced from HEK293T cells transfected with MALT1 cDNA clone (Cat# [RC204322]) using MegaTran 2.0 (Cat# [TT210002]).