

## Product datasheet for PH304319

### ARSA (NM\_000487) Human Mass Spec Standard

#### Product data:

Product Type:	Mass Spec Standards
Description:	ARSA MS Standard C13 and N15-labeled recombinant protein (NP_000478)
Species:	Human
Expression Host:	HEK293
Expression cDNA Clone or AA Sequence:	RC204319
Predicted MW:	53.6 kDa
Protein Sequence:	>RC204319 protein sequence Red=Cloning site Green=Tags(s)

MGAPRSLLLALAAGLAVARPPNIVLIFADDLGYGDLGCGYHPSSTTPNLDQLAAGGLRFTDFYVPVSLCT  
PSRAALLTGRLPVRMGMPGVLPSSRGGLPLEEVTVAEVLAAARGYL TGMAGKWHLGVGPEGAFLPPHQG  
FHRFLGIPYSHDQGPCQNLTCFPPATPCDGGCDQGLVPIPLLANLSVEAQPWLPGLEARYMAFAHDLMA  
DAQRQDRPFLLYASHHHTYPQFSGQSF AERSGRGPFGDSLMELDAAVGTLMTAIGDLGLEETLVIFTA  
DNGPETMRMSRGGCSGLLRGCGTTEYEGVREPALAFWPGHIAPGVTHELASSLDLLPTLAALAGAPLPN  
VTLDGFDLSPLLLGTGKSPRQSLFFYPSYPDEVRGVFAVRSGKYKAHFF TQSAHSDTTADPACHASSSL  
TAHEPPLLYDL SKDPGENYNLLGGVAGATPEVLQALKQLQLLKAQLDAAVTFGPSQVARGEDPALQICCH  
PGCTPRPACCHCPDPA

TRTRPLEQKLI SEEDLAANDILDYKDDDDKV

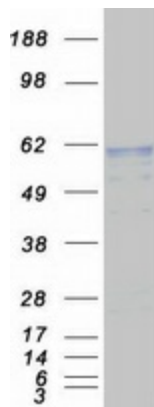
Tag:	C-Myc/DDK
Purity:	> 80% as determined by SDS-PAGE and Coomassie blue staining
Concentration:	>0.05 µg/µL as determined by microplate BCA method
Labeling Method:	Labeled with [U- 13C6, 15N4]-L-Arginine and [U- 13C6, 15N2]-L-Lysine
Buffer:	25 mM Tris-HCl, 100 mM glycine, pH 7.3
Storage:	Store at -80°C. Avoid repeated freeze-thaw cycles.
Stability:	Stable for 3 months from receipt of products under proper storage and handling conditions.
RefSeq:	<u>NP_000478</u>
RefSeq Size:	4325
RefSeq ORF:	1521



[View online »](#)

Synonyms:	ASA; MLD
Locus ID:	410
UniProt ID:	<a href="#">P15289</a> , <a href="#">A0A0C4DFZ2</a> , <a href="#">B4DVI5</a>
Cytogenetics:	22q13.33
Summary:	The protein encoded by this gene hydrolyzes cerebroside sulfate to cerebroside and sulfate. Defects in this gene lead to metachromatic leucodystrophy (MLD), a progressive demyelination disease which results in a variety of neurological symptoms and ultimately death. Alternatively spliced transcript variants have been described for this gene. [provided by RefSeq, Dec 2010]
Protein Families:	Druggable Genome
Protein Pathways:	Lysosome, Sphingolipid metabolism

### Product images:



Coomassie blue staining of purified ARSA protein (Cat# [TP304319]). The protein was produced from HEK293T cells transfected with ARSA cDNA clone (Cat# [RC204319]) using MegaTran 2.0 (Cat# [TT210002]).