

## Product datasheet for PH304317

### GLUT8 (SLC2A8) (NM\_014580) Human Mass Spec Standard

#### Product data:

Product Type:	Mass Spec Standards
Description:	SLC2A8 MS Standard C13 and N15-labeled recombinant protein (NP_055395)
Species:	Human
Expression Host:	HEK293
Expression cDNA Clone or AA Sequence:	RC204317
Predicted MW:	50.8 kDa
Protein Sequence:	>RC204317 protein sequence Red=Cloning site Green=Tags(s)

MTPEDPEETQPLLGPFGSAPRGRVFLAAFAALGPLSFGFALGYSSPAIPSLQRAAPPAPRLDDAAAS  
 WFGAVVTLGAAAGVVLGGWLVDRAGRKLSLLCSVPFVAGFAVITAAQDVWMLLGGRLTLGACGVASLV  
 APVYISEIAYPAVRGLLGSCVQLMVVVGILLAYLAGWLEWRWLAVLGCVPPSLMLLMCFMPETPRFL  
 TQHRRQEAMAALRFLWGSEQGWEDPPIGAEQSFHLALLRQPGIYKPFIIIGVSLMAFQQLSGVNAVMFYAE  
 TIFEEAKFKDSSLASVVVGVIVLFTAVAALIMDRAGRRLLLVLSGVVMVFSTSAFGAYFKLTQGGPGNS  
 SHVAISAPVSAQPVDAVGLAWLAVGSMCLFIAGFAVGWGPWPWLLMSEIFPLHVKGVAATGICVLTNWLM  
 AFLVTKEFSSLMEVLRPYGAFWLASAFCIFSVLFTLFCVPETKGTLEQITAHFEGR

TRTRPLEQKLISEEDLAANDILDYKDDDDKV

Tag:	C-Myc/DDK
Purity:	> 80% as determined by SDS-PAGE and Coomassie blue staining
Concentration:	>0.05 µg/µL as determined by microplate BCA method
Labeling Method:	Labeled with [U- <sup>13</sup> C <sub>6</sub> , <sup>15</sup> N <sub>4</sub> ]-L-Arginine and [U- <sup>13</sup> C <sub>6</sub> , <sup>15</sup> N <sub>2</sub> ]-L-Lysine
Buffer:	25 mM Tris-HCl, 100 mM glycine, pH 7.3
Storage:	Store at -80°C. Avoid repeated freeze-thaw cycles.
Stability:	Stable for 3 months from receipt of products under proper storage and handling conditions.
RefSeq:	<u><a href="#">NP_055395</a></u>
RefSeq Size:	2176
RefSeq ORF:	1431
Synonyms:	GLUT8; GLUTX1



[View online »](#)

Locus ID: 29988

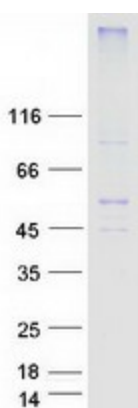
UniProt ID: [Q9NY64](#), [Q8WZ05](#), [A0A024R871](#)

Cytogenetics: 9q33.3

**Summary:** This gene belongs to the solute carrier 2A family, which includes intracellular glucose transporters. Based on sequence comparison, the glucose transporters are grouped into three classes and this gene is a member of class II. The encoded protein, like other members of the family, contains several conserved residues and motifs and 12 transmembrane domains with both amino and carboxyl ends being on the cytosolic side of the membrane. Alternatively spliced transcript variants have been described for this gene. [provided by RefSeq, Nov 2012]

**Protein Families:** Transmembrane

### Product images:



Coomassie blue staining of purified SLC2A8 protein (Cat# [TP304317]). The protein was produced from HEK293T cells transfected with SLC2A8 cDNA clone (Cat# [RC204317]) using MegaTran 2.0 (Cat# [TT210002]).