

Product datasheet for PH304310

SLC66A2 (NM_025078) Human Mass Spec Standard

Product data:

Product Type:	Mass Spec Standards
Description:	PQLC1 MS Standard C13 and N15-labeled recombinant protein (NP_079354)
Species:	Human
Expression Host:	HEK293
Expression cDNA Clone or AA Sequence:	RC204310
Predicted MW:	30.5 kDa
Protein Sequence:	>RC204310 protein sequence Red=Cloning site Green=Tags(s) MEAEGLDWLLVPLHQLVSWGAAAAMVFGGVVPYPQYRDIRRTQNADGFSTYVCLVLLVANILRILFWFG RRFESPLLWQSAIMILTMLMLKLCTEVVRANELNARRRSFTAADSKDEEVKVPARRSFLDFDPHFWQW SSFSDYVQCVLAFITGVAGYITYLSIDSALFVETLGFLAVLTEAMLGVPQLYRNHRHQSTEGMSIKMVLMMW TSGDAFKTAYFLLKGAQLQFSVCGLLQVLVDLAILGQAYAFARHPQKPAPHAVHPTGTKAL TRTRPLEQKLI SEEDLAANDILDYKDDDDKV
Tag:	C-Myc/DDK
Purity:	> 80% as determined by SDS-PAGE and Coomassie blue staining
Concentration:	>0.05 µg/µL as determined by microplate BCA method
Labeling Method:	Labeled with [U- 13C6, 15N4]-L-Arginine and [U- 13C6, 15N2]-L-Lysine
Buffer:	25 mM Tris-HCl, 100 mM glycine, pH 7.3
Storage:	Store at -80°C. Avoid repeated freeze-thaw cycles.
Stability:	Stable for 3 months from receipt of products under proper storage and handling conditions.
RefSeq:	NP_079354
RefSeq Size:	2565
RefSeq ORF:	813
Synonyms:	PQLC1
Locus ID:	80148
UniProt ID:	Q8N2U9

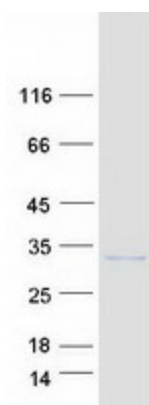


[View online »](#)

Cytogenetics: 18q23

Protein Families: Transmembrane

Product images:



Coomassie blue staining of purified SLC66A2 protein (Cat# [TP304310]). The protein was produced from HEK293T cells transfected with SLC66A2 cDNA clone (Cat# [RC204310]) using MegaTran 2.0 (Cat# [TT210002]).