

Product datasheet for PH304282

TRAK1 (NM_014965) Human Mass Spec Standard

Product data:

Product Type:	Mass Spec Standards
Description:	TRAK1 MS Standard C13 and N15-labeled recombinant protein (NP_055780)
Species:	Human
Expression Host:	HEK293
Expression cDNA Clone or AA Sequence:	RC204282
Predicted MW:	77.5 kDa
Protein Sequence:	>RC204282 protein sequence Red=Cloning site Green=Tags(s)

MSLRDKGGEEECFEYDCQDEERKPTRQHDQDLLEEVLCAERVGQMTKYNDIDAVTRLLEEKERDLEL
AARIGQSLKKNKTLTERNELLEQVEHIREEVSQLRHEL SMKDELLQFYTSAAEESEPEVCSTPLKRN
ESSSSVQNYFHLDLQKQKLDLEENNVLRSEASQLKTETITYEEKEQQLVNDVCVELRDANVQIASISE
ELAKKTEDAARQEEITHLLSQIVDLQKAKACAVENEELVQHLGAAKDAQRQLTAELELEDKYAECME
MLHEAQEELKNLRNKTMPNTTSRRYHSLGLFPMDSLAAEIEGTMRKELQLEEAESPDIHQKRVFETVRN
INQVVKQRSLTPSPMNI PGSNQSSAMNLLSSCVSTPRSSFYGS DIGNVVLDNKTNSIILETEAADLGND
ERSKKPGTPTGSHDLETALRRLSLRRENYL SERRFFEEEQERKLQELAEKGELRSGSLTPTESIMSLG
THSRFSEFTGFGMSFSSRSYLPEKLQIVKPLEGSATLHHWQQLAQPHLGGILDPRPGVVTGKFRTLDVD
LDEVYCLNDFEEDDTGDHISLPLRATSTPVQHPETSGERSQARVTVSGRSYPSRPQASPEEMQEPPAAT
EEEEEEEEEEEEEGSGEGTTISPVNLAPFPEAEFWAILTSVPGTIRSGSLSVASARLCG

TRTRPLEQKLI SEEDLAANDILDYKDDDDKV

Tag:	C-Myc/DDK
Purity:	> 80% as determined by SDS-PAGE and Coomassie blue staining
Concentration:	>0.05 µg/µL as determined by microplate BCA method
Labeling Method:	Labeled with [U- 13C6, 15N4]-L-Arginine and [U- 13C6, 15N2]-L-Lysine
Buffer:	25 mM Tris-HCl, 100 mM glycine, pH 7.3
Storage:	Store at -80°C. Avoid repeated freeze-thaw cycles.
Stability:	Stable for 3 months from receipt of products under proper storage and handling conditions.
RefSeq:	NP_055780
RefSeq Size:	4623



[View online »](#)

RefSeq ORF: 2064

Synonyms: EIEE68; MILT1; OIP106

Locus ID: 22906

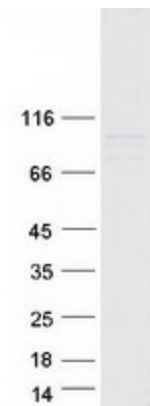
UniProt ID: [Q9UPV9](#), [B7ZAE5](#)

Cytogenetics: 3p22.1

Summary: Involved in the regulation of endosome-to-lysosome trafficking, including endocytic trafficking of EGF-EGFR complexes and GABA-A receptors (PubMed:18675823). Involved in mitochondrial motility. When O-glycosylated, abolishes mitochondrial motility. Crucial for recruiting OGT to the mitochondrial surface of neuronal processes (PubMed:24995978). TRAK1 and RHOT form an essential protein complex that links KIF5 to mitochondria for light chain-independent, anterograde transport of mitochondria (By similarity).[UniProtKB/Swiss-Prot Function]

Protein Families: Transcription Factors

Product images:



Coomassie blue staining of purified TRAK1 protein (Cat# [TP304282]). The protein was produced from HEK293T cells transfected with TRAK1 cDNA clone (Cat# [RC204282]) using MegaTran 2.0 (Cat# [TT210002]).