

Product datasheet for PH304276

ZNF307 (ZKSCAN4) (NM_019110) Human Mass Spec Standard

Product data:

Product Type:	Mass Spec Standards
Description:	ZKSCAN4 MS Standard C13 and N15-labeled recombinant protein (NP_061983)
Species:	Human
Expression Host:	HEK293
Expression cDNA Clone or AA Sequence:	RC204276
Predicted MW:	61.6 kDa
Protein Sequence:	>RC204276 protein sequence Red=Cloning site Green=Tags(s)

MAREPRKNAALDAQSAEDQTGLLTVKVEKEEASALTAEVRAPCSPARGPERSRQFRGFRYPPEAAGPREA
LSRLRELCGQWLQPEMHSKEQILELLVLEQFLTILPGNLQSWVREQHPESGEEVVVLLLEYLERQLDEPAP
QVPVGDQGGQELLCKMALLTQTQGSQSSQCQPMKALFKHESLGSQPLHDRVLPVPLAQQGCCREDAMVA
SRLTPGSQGLLKMEDVALTLTPGWTQLDSSQVNLVYRDEKQENHSSLVSLGGEIQTKSRDLPPVKLPEKE
HGKICHLREDIAQIPTHAEAGEQEGRLQRKQKNAIGSRRHYCHECGKSFAQSSGLTKHRRHTGKPYEC
EDCGKTFIGSSALVIHQVHTGKPYECEECGKVFSSHSSNLIKHQRTHTGKPYECDGKTFSSQSCSLL
EHHKIHTGKPYQCNMCGKAFRRNSHLLRHQRHGDKNVQNPHEGESWESQGRTESQWENTEAPVSYKCN
ECERSFTRNRSLEIHKIHTGKPYQCDTCGKGFTRTSYLVQHQRSVHGKKTLSQ

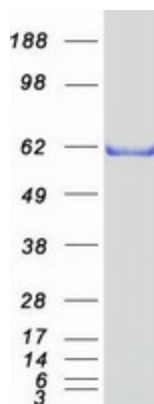
TRTRPLEQKLISEEDLAANDILDYKDDDDKV

Tag:	C-Myc/DDK
Purity:	> 80% as determined by SDS-PAGE and Coomassie blue staining
Concentration:	>0.05 µg/µL as determined by microplate BCA method
Labeling Method:	Labeled with [U- ¹³ C ₆ , ¹⁵ N ₄]-L-Arginine and [U- ¹³ C ₆ , ¹⁵ N ₂]-L-Lysine
Buffer:	25 mM Tris-HCl, 100 mM glycine, pH 7.3
Storage:	Store at -80°C. Avoid repeated freeze-thaw cycles.
Stability:	Stable for 3 months from receipt of products under proper storage and handling conditions.
RefSeq:	<u>NP_061983</u>
RefSeq Size:	2307
RefSeq ORF:	1635



[View online »](#)

Synonyms:	P1P373C6; ZNF307; ZNF427; ZSCAN36
Locus ID:	387032
UniProt ID:	Q969J2 , A0A0S2Z658
Cytogenetics:	6p22.1
Summary:	May be involved in the transcriptional activation of MDM2 and EP300 genes. [UniProtKB/Swiss-Prot Function]
Protein Families:	Transcription Factors

Product images:

Coomassie blue staining of purified ZKSCAN4 protein (Cat# [TP304276]). The protein was produced from HEK293T cells transfected with ZKSCAN4 cDNA clone (Cat# [RC204276]) using MegaTran 2.0 (Cat# [TT210002]).