

## Product datasheet for PH304261

### KT112 (NM\_138417) Human Mass Spec Standard

#### Product data:

Product Type:	Mass Spec Standards
Description:	KT112 MS Standard C13 and N15-labeled recombinant protein (NP_612426)
Species:	Human
Expression Host:	HEK293
Expression cDNA Clone or AA Sequence:	RC204261
Predicted MW:	38.6 kDa
Protein Sequence:	>RC204261 protein sequence Red=Cloning site Green=Tags(s)

MPLVVF CGLPYS GKSRR AEELRVALAAEGR AVYVDDAAVLGAEDPAVYGDSAREKALRGALRASVERRL  
SRHDVVILDSLNYIKGFRYEL YCLARAARTPLCLVYCVRPGGPIAGPQVAGANENPGRNVSVSWRPRAEE  
DGRAQAAGSSVLR ELHTADSVVNGSAQADV PKELEREESGAAESPALVTPDSEKSAKHGSGAFYSPELLE  
ALTLRFEAPDSRNRWDRPLFTLVGLEEPLPLAGIRSALFENRAPP HQSTQSQPLASGSFLHQLDQVTSQ  
VLAGLMEAQKSAVPGDLLTLPGTTEHLRFTRPLTMAELSR LRRQFI SYTKMHPNNENLPQLANMFLQYLS  
QSLH

TRTRPLEQKLI SEEDLAANDILDYKDDDDKV

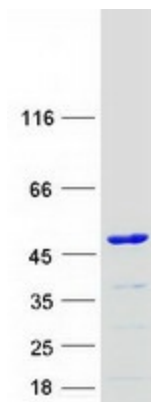
Tag:	C-Myc/DDK
Purity:	> 80% as determined by SDS-PAGE and Coomassie blue staining
Concentration:	>0.05 µg/µL as determined by microplate BCA method
Labeling Method:	Labeled with [U- <sup>13</sup> C <sub>6</sub> , <sup>15</sup> N <sub>4</sub> ]-L-Arginine and [U- <sup>13</sup> C <sub>6</sub> , <sup>15</sup> N <sub>2</sub> ]-L-Lysine
Buffer:	25 mM Tris-HCl, 100 mM glycine, pH 7.3
Storage:	Store at -80°C. Avoid repeated freeze-thaw cycles.
Stability:	Stable for 3 months from receipt of products under proper storage and handling conditions.
RefSeq:	<u><a href="#">NP_612426</a></u>
RefSeq Size:	1712
RefSeq ORF:	1062
Synonyms:	SBBI81; TOT4
Locus ID:	112970



[View online »](#)

UniProt ID: [Q96EK9](#)  
Cytogenetics: 1p32.3  
Protein Families: Druggable Genome

### Product images:



Coomassie blue staining of purified KT112 protein (Cat# [TP304261]). The protein was produced from HEK293T cells transfected with KT112 cDNA clone (Cat# [RC204261]) using MegaTran 2.0 (Cat# [TT210002]).