

## Product datasheet for PH304256

### AdSS 2 (ADSS) (NM\_001126) Human Mass Spec Standard

#### Product data:

Product Type:	Mass Spec Standards
Description:	ADSS MS Standard C13 and N15-labeled recombinant protein (NP_001117)
Species:	Human
Expression Host:	HEK293
Expression cDNA Clone or AA Sequence:	RC204256
Predicted MW:	50.1 kDa
Protein Sequence:	>RC204256 protein sequence Red=Cloning site Green=Tags(s)
	MAFAETYPAASSLPNGDCGRPRARPGGNRVTVVLGAQWGDEGKGVVDLLAQDADIVCRCQGGNNAGHTV VVDSVEYDFHLLPSGIINPNVTAFIGNGVVIHLPLGFEEAEKNVQKKGLEGWEKRLIISDRAHIVDFH QAADGIQEQQRQEQAQGNLGTTKKIGIPYSSKAARSGLRMDLVSDFDGFSERFKVLANQYKSIYPTLE IDIEGELQKLKGYMEKIKPMVRDGVYFLYEALHGPPKILVEGANAALLDIDFGTYPFVTSNCTVGGVC TGLGMPQNVGEVYGVVKAYTTRVGIGAFPTEQDNEIGELLQTRGREFGVTTRKRRCGWLDLVLKAYH MINGFTALALTKLDILDMFTEIKVGVAAYKLDGEIIPHIPANQEVLNKVEVQYKTLPGWNTDISNARAFKE LPVNAQNYVRFIEDELQIPVKWIGVGKSRESMIQLF
	TRTRPLEQKLISEEDLAANDILDYKDDDDKV
Tag:	C-Myc/DDK
Purity:	> 80% as determined by SDS-PAGE and Coomassie blue staining
Concentration:	>0.05 µg/µL as determined by microplate BCA method
Labeling Method:	Labeled with [U- 13C6, 15N4]-L-Arginine and [U- 13C6, 15N2]-L-Lysine
Buffer:	25 mM Tris-HCl, 100 mM glycine, pH 7.3
Storage:	Store at -80°C. Avoid repeated freeze-thaw cycles.
Stability:	Stable for 3 months from receipt of products under proper storage and handling conditions.
RefSeq:	<u>NP_001117</u>
RefSeq Size:	2791
RefSeq ORF:	1368
Synonyms:	ADEH; ADSS; ADSS 2



[View online »](#)

Locus ID: 159

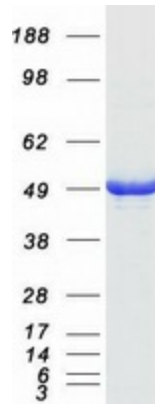
UniProt ID: [P30520](#), [A0A024R5Q7](#)

Cytogenetics: 1q44

Summary: This gene encodes the enzyme adenylosuccinate synthetase which catalyzes the first committed step in the conversion of inosine monophosphate to adenosine monophosphate. A pseudogene of this gene is found on chromosome 17.[provided by RefSeq, Nov 2010]

Protein Pathways: Alanine, aspartate and glutamate metabolism, Metabolic pathways, Purine metabolism

### Product images:



Coomassie blue staining of purified ADSS protein (Cat# [TP304256]). The protein was produced from HEK293T cells transfected with ADSS cDNA clone (Cat# [RC204256]) using MegaTran 2.0 (Cat# [TT210002]).