

## Product datasheet for PH304255

### MRPL53 (NM\_053050) Human Mass Spec Standard

#### Product data:

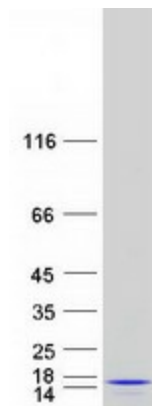
Product Type:	Mass Spec Standards
Description:	MRPL53 MS Standard C13 and N15-labeled recombinant protein (NP_444278)
Species:	Human
Expression Host:	HEK293
Expression cDNA Clone or AA Sequence:	RC204255
Predicted MW:	12.1 kDa
Protein Sequence:	>RC204255 protein sequence <b>Red</b> =Cloning site <b>Green</b> =Tags(s)  MAAALARLGLRPVKQVRVQFCPFKENVSTRTRFLQTVSSEKVRSTNLNCSVIADVRHDGSEPCVDVLFGD GHRLIMRGAHLTALEMLTAFASHIRARDAAGSGDKPGADTGR  <b>TRTRPLEQKLISEEDLAANDILDYKDDDDKV</b>
Tag:	C-Myc/DDK
Purity:	> 80% as determined by SDS-PAGE and Coomassie blue staining
Concentration:	>0.05 µg/µL as determined by microplate BCA method
Labeling Method:	Labeled with [U- 13C6, 15N4]-L-Arginine and [U- 13C6, 15N2]-L-Lysine
Buffer:	25 mM Tris-HCl, 100 mM glycine, pH 7.3
Storage:	Store at -80°C. Avoid repeated freeze-thaw cycles.
Stability:	Stable for 3 months from receipt of products under proper storage and handling conditions.
RefSeq:	<a href="#">NP_444278</a>
RefSeq Size:	673
RefSeq ORF:	336
Synonyms:	L53MT
Locus ID:	116540
UniProt ID:	<a href="#">Q96EL3</a>
Cytogenetics:	2p13.1



[View online »](#)

**Summary:**

Mammalian mitochondrial ribosomal proteins are encoded by nuclear genes and help in protein synthesis within the mitochondrion. Mitochondrial ribosomes (mitoribosomes) consist of a small 28S subunit and a large 39S subunit. They have an estimated 75% protein to rRNA composition compared to prokaryotic ribosomes, where this ratio is reversed. Another difference between mammalian mitoribosomes and prokaryotic ribosomes is that the latter contain a 5S rRNA. Among different species, the proteins comprising the mitoribosome differ greatly in sequence, and sometimes in biochemical properties, which prevents easy recognition by sequence homology. This gene encodes a 39S subunit protein. A pseudogene corresponding to this gene is found on chromosome 1p. [provided by RefSeq, Jul 2008]

**Product images:**

Coomassie blue staining of purified MRPL53 protein (Cat# [TP304255]). The protein was produced from HEK293T cells transfected with MRPL53 cDNA clone (Cat# [RC204255]) using MegaTran 2.0 (Cat# [TT210002]).