

## Product datasheet for PH304247

### TMEM222 (NM\_032125) Human Mass Spec Standard

#### Product data:

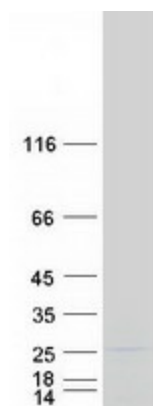
Product Type:	Mass Spec Standards
Description:	TMEM222 MS Standard C13 and N15-labeled recombinant protein (NP_115501)
Species:	Human
Expression Host:	HEK293
Expression cDNA Clone or AA Sequence:	RC204247
Predicted MW:	23 kDa
Protein Sequence:	<p>&gt;RC204247 representing NM_032125</p> <p>Red=Cloning site Green=Tags(s)</p> <p>MAEVEAPTAAETDMKQYQSGGVAMDVERSRFPYCVVWTPIPVLTWFFPIIGHMGICTSTGVIRDFAGPY            FVSEDNMAFGKPAKYWKLDPAQVYASGPNAWDTAVHDASEEYKHRMHNLCDDNCHSHVALALNLMRYNNS            TNWNMVTLCFFCLLYGKYVSVGAFVKTWLPFILLGIIITVSLVFNLR</p> <p>TRTRPLEQKLISEEDLAANDILDYKDDDDKV</p>
Tag:	C-Myc/DDK
Purity:	> 80% as determined by SDS-PAGE and Coomassie blue staining
Concentration:	>0.05 µg/µL as determined by microplate BCA method
Labeling Method:	Labeled with [U- <sup>13</sup> C <sub>6</sub> , <sup>15</sup> N <sub>4</sub> ]-L-Arginine and [U- <sup>13</sup> C <sub>6</sub> , <sup>15</sup> N <sub>2</sub> ]-L-Lysine
Buffer:	25 mM Tris-HCl, 100 mM glycine, pH 7.3
Storage:	Store at -80°C. Avoid repeated freeze-thaw cycles.
Stability:	Stable for 3 months from receipt of products under proper storage and handling conditions.
RefSeq:	<u>NP_115501</u>
RefSeq Size:	1629
RefSeq ORF:	564
Synonyms:	C1orf160
Locus ID:	84065
UniProt ID:	<u>Q9H0R3</u>


[View online »](#)

Cytogenetics: 1p36.11

Protein Families: Transmembrane

### Product images:



Coomassie blue staining of purified TMEM222 protein (Cat# [TP304247]). The protein was produced from HEK293T cells transfected with TMEM222 cDNA clone (Cat# [RC204247]) using MegaTran 2.0 (Cat# [TT210002]).