

Product datasheet for PH304244

SEPTIN6 (NM_145802) Human Mass Spec Standard

Product data:

Product Type:	Mass Spec Standards
Description:	SEPT6 MS Standard C13 and N15-labeled recombinant protein (NP_665801)
Species:	Human
Expression Host:	HEK293
Expression cDNA Clone or AA Sequence:	RC204244
Predicted MW:	49.2 kDa
Protein Sequence:	>RC204244 protein sequence Red=Cloning site Green=Tags(s)

MAATDIARQVGEGRCTVPLAGHVGFDSLDPQLVNKSVSQGFCFNILCVGETGLGKSTLMDTLFNTKFEGE
 PATHTQPGVQLQSNTYDLQESNVRKLTIVSTVGFQDQINKEDSYKPIVEFIDAQFEAYLQEELKIRRVL
 HTYHDSRIHVCLYFIAPTGHSLKSLDLVTMKKLDKSVNIIPIIAKADAISKSELTKFKIKITSELVSNV
 QIYQFPTDDESVAEINGTMNAHLPFVAVIGSTEELKIGNKMMRARQYPWGTVQVENEAHCDFVKLREMLIR
 VNMEDLREQTHTRHYELYRCKLEEMGFKDTDPDSKPFSLQETYEAKRNEFLGELQKKEEEMRQMFVQRV
 KEKEAELKEAEKELHEKFDRLKKLHQDEKKKLEDKKKSLDDEVNAFKQRKTAELLQSQGSQAGGSQTLK
 RDKEKKNFF

TRTRPLEQKLISEEDLAANDILDYKDDDDKV

Tag:	C-Myc/DDK
Purity:	> 80% as determined by SDS-PAGE and Coomassie blue staining
Concentration:	>0.05 µg/µL as determined by microplate BCA method
Labeling Method:	Labeled with [U- ¹³ C ₆ , ¹⁵ N ₄]-L-Arginine and [U- ¹³ C ₆ , ¹⁵ N ₂]-L-Lysine
Buffer:	25 mM Tris-HCl, 100 mM glycine, pH 7.3
Storage:	Store at -80°C. Avoid repeated freeze-thaw cycles.
Stability:	Stable for 3 months from receipt of products under proper storage and handling conditions.
RefSeq:	<u>NP_665801</u>
RefSeq Size:	2564
RefSeq ORF:	1287
Synonyms:	SEP2; SEPT2; SEPT6



[View online »](#)

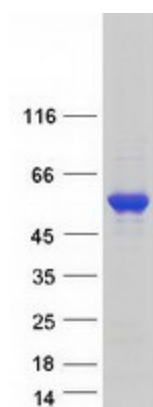
Locus ID: 23157

UniProt ID: [Q14141](#), [Q548C9](#)

Cytogenetics: Xq24

Summary: This gene is a member of the septin family of GTPases. Members of this family are required for cytokinesis. One version of pediatric acute myeloid leukemia is the result of a reciprocal translocation between chromosomes 11 and X, with the breakpoint associated with the genes encoding the mixed-lineage leukemia and septin 2 proteins. This gene encodes four transcript variants encoding three distinct isoforms. An additional transcript variant has been identified, but its biological validity has not been determined. [provided by RefSeq, Jul 2008]

Product images:



Coomassie blue staining of purified SEPTIN6 protein (Cat# [TP304244]). The protein was produced from HEK293T cells transfected with SEPTIN6 cDNA clone (Cat# [RC204244]) using MegaTran 2.0 (Cat# [TT210002]).