

## Product datasheet for PH304232

### BTN2A2 (NM\_006995) Human Mass Spec Standard

#### Product data:

Product Type:	Mass Spec Standards
Description:	BTN2A2 MS Standard C13 and N15-labeled recombinant protein (NP_008926)
Species:	Human
Expression Host:	HEK293
Expression cDNA Clone or AA Sequence:	RC204232
Predicted MW:	59.1 kDa
Protein Sequence:	>RC204232 protein sequence Red=Cloning site Green=Tags(s)

MEPAAALHFSLPASLLLLLLLLLLLLSLCALVSAQFTVVGPNPILAMVGENTTLRCHLSPEKNAEDMEVRW  
FRSQFSPA VFVYKGGRRERTEEQMEEYRGRITFVSKDINRGSVALVIHNVTAQENGIYRCYFQEGRSYDEA  
ILRLVVAGLGSKPLIEIKAQEDGSIWLECSGGWYPEPLTVWRDPYGEVVPALKEYSIADADGLFMVTTA  
VIIRDKYVRNVSCSVNNTLLGQEKETVIFIPESFMPSASPMMVALAVILTASPMMVSMVTILAVFIIFMA  
VSICCIKKLQREKKILSGEKKVEQEEKEIAQQLQEELRWRRTFLHAADVLDPDTAHPFLFLSEDRRSVR  
RGPYRQVRVDPNPERFDSQPCVLGWESFASGKHYWEVEVENVMVWTVGVCRHVSVERKGEVLLIPQNGFWTL  
EMFGNQYRALSSPERILPLKESLCRVGVFLDYEAGDVSFYNMRDRSHIYTCPRSAFTVPVRRPFFRLGSD  
SPIFICPALTGASGVMVPEEGLKLRVGVTHQSL

TRTRPLEQKLI SEEDLAANDILDYKDDDDKV

Tag:	C-Myc/DDK
Purity:	> 80% as determined by SDS-PAGE and Coomassie blue staining
Concentration:	>0.05 µg/µL as determined by microplate BCA method
Labeling Method:	Labeled with [U- 13C6, 15N4]-L-Arginine and [U- 13C6, 15N2]-L-Lysine
Buffer:	25 mM Tris-HCl, 100 mM glycine, pH 7.3
Storage:	Store at -80°C. Avoid repeated freeze-thaw cycles.
Stability:	Stable for 3 months from receipt of products under proper storage and handling conditions.
RefSeq:	<u>NP_008926</u>
RefSeq Size:	3602
RefSeq ORF:	1569



[View online »](#)

**Synonyms:** BT2.2; BTF2; BTN2.2

**Locus ID:** 10385

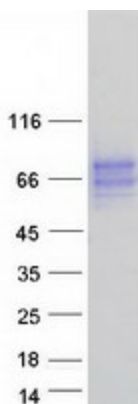
**UniProt ID:** [Q8WVV5](#), [A0A024R038](#)

**Cytogenetics:** 6p22.2

**Summary:** Butyrophilin is the major protein associated with fat droplets in the milk. This gene is a member of the BTN2 subfamily of genes, which encode proteins belonging to the butyrophilin protein family. The gene is located in a cluster on chromosome 6, consisting of seven genes belonging to the expanding B7/butyrophilin-like group, a subset of the immunoglobulin gene superfamily. The encoded protein is a type I receptor glycoprotein involved in lipid, fatty-acid and sterol metabolism. Several alternatively spliced transcript variants encoding different isoforms have been found for this gene. [provided by RefSeq, Oct 2010]

**Protein Families:** Druggable Genome, Transmembrane

### Product images:



Coomassie blue staining of purified BTN2A2 protein (Cat# [TP304232]). The protein was produced from HEK293T cells transfected with BTN2A2 cDNA clone (Cat# [RC204232]) using MegaTran 2.0 (Cat# [TT210002]).