

Product datasheet for PH304227

HSPBAP1 (NM_024610) Human Mass Spec Standard

Product data:

Product Type:	Mass Spec Standards
Description:	HSPBAP1 MS Standard C13 and N15-labeled recombinant protein (NP_078886)
Species:	Human
Expression Host:	HEK293
Expression cDNA Clone or AA Sequence:	RC204227
Predicted MW:	55.2 kDa
Protein Sequence:	>RC204227 protein sequence Red =Cloning site Green =Tags(s)

MAAGSEATTPVIVAAGAGGEEGEHVKPFKPEKAKEIIMSLQQPAIFCNMVFDPARHWNAYLSQVLHGK
 QIRFRMGKMSMSTVPQFETTCNYVEATLEEFLLTWNCDSISGPFDRDYHDKFWAYADYKYFVSLFEDKT
 DLFQDVKWSDFGFPGRNGQESTLWIGSLGAHTPCHLDSYGCNLVFQVQGRKRWHLPPEPTPFLYPTRI
 YEESVFSKINVNPDLKRFQFRKAQRHAYTLSPGQVLFVPRHWHYVESIDPVTVSINSWIELEEDHL
 ARVEEAITRMLVCALKTAENPQNTRAWLNPTEVEETSHAVNCCYLNAAVSAFFDCRTSEVVEIQALRTD
 GEHMKKEELNVCNHMEVGQTGSQNLTTGTDKPEAASPFGLPVAQRSEPPSERGGIFGSDGKDFVDK
 DGEHFGKLHCAKRQQIMSNSENAIEEQIASNTTTTPQTFISTDDLLDCLVNPQVTRIVAQLLIQGRSL

TRTRPLEQKLISEEDLAANDILDYKDDDDKV

Tag:	C-Myc/DDK
Purity:	> 80% as determined by SDS-PAGE and Coomassie blue staining
Concentration:	>0.05 µg/µL as determined by microplate BCA method
Labeling Method:	Labeled with [U- ¹³ C ₆ , ¹⁵ N ₄]-L-Arginine and [U- ¹³ C ₆ , ¹⁵ N ₂]-L-Lysine
Buffer:	25 mM Tris-HCl, 100 mM glycine, pH 7.3
Storage:	Store at -80°C. Avoid repeated freeze-thaw cycles.
Stability:	Stable for 3 months from receipt of products under proper storage and handling conditions.
RefSeq:	<u>NP_078886</u>
RefSeq Size:	1972
RefSeq ORF:	1464
Synonyms:	PASS1


[View online »](#)

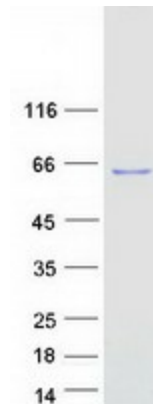
Locus ID: 79663

UniProt ID: [Q96EW2](#), [A8K045](#)

Cytogenetics: 3q21.1

Summary: This gene encodes a protein that binds to one of the small heat shock proteins, specifically hsp27. Hsp27 is involved with cell growth and differentiation. This encoded protein was found to be abnormally expressed in patients with intractable epilepsy, although how brain function is affected remains unknown. [provided by RefSeq, Sep 2011]

Product images:



Coomassie blue staining of purified HSPBAP1 protein (Cat# [TP304227]). The protein was produced from HEK293T cells transfected with HSPBAP1 cDNA clone (Cat# [RC204227]) using MegaTran 2.0 (Cat# [TT210002]).