

## Product datasheet for PH304226

### HAUS1 (NM\_138443) Human Mass Spec Standard

#### Product data:

Product Type:	Mass Spec Standards
Description:	HAUS1 MS Standard C13 and N15-labeled recombinant protein (NP_612452)
Species:	Human
Expression Host:	HEK293
Expression cDNA Clone or AA Sequence:	RC204226
Predicted MW:	31.9 kDa
Protein Sequence:	>RC204226 protein sequence Red=Cloning site Green=Tags(s)  MEPQEERETQVAAWLKKIFGDHPIPQYEVNPRTEILHHLSENRVRDRDYYLVIEDLKQKASEYESEAK YLQDLLMESVNFSPANLSTGSRYLNALVDSVALETKDTSLASFIPAVNDLTSDLFRTKSKSEEIKIEL EKLEKNLTATLVLEKCLQEDVKKAEHLHLSTERAKVDNRRQNMDFLKAKSEEFRFGIKAAEQLSARGMDA SLSHQSLVALSEKLARLKQQTIPKLLKLESYLDLMPNPSLAQVKIEEAKRELDSEAELTRRVDMMEL  TRTRPLEQKLI SEEDLAANDILDYKDDDDKV
Tag:	C-Myc/DDK
Purity:	> 80% as determined by SDS-PAGE and Coomassie blue staining
Concentration:	>0.05 µg/µL as determined by microplate BCA method
Labeling Method:	Labeled with [U- <sup>13</sup> C <sub>6</sub> , <sup>15</sup> N <sub>4</sub> ]-L-Arginine and [U- <sup>13</sup> C <sub>6</sub> , <sup>15</sup> N <sub>2</sub> ]-L-Lysine
Buffer:	25 mM Tris-HCl, 100 mM glycine, pH 7.3
Storage:	Store at -80°C. Avoid repeated freeze-thaw cycles.
Stability:	Stable for 3 months from receipt of products under proper storage and handling conditions.
RefSeq:	<a href="#">NP_612452</a>
RefSeq Size:	1145
RefSeq ORF:	834
Synonyms:	CCDC5; HEI-C; HEIC; HsT1461
Locus ID:	115106
UniProt ID:	<a href="#">Q96CS2</a>



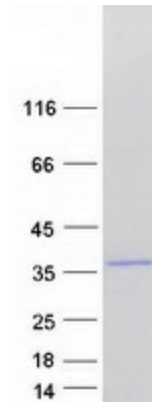
[View online »](#)

**Cytogenetics:** 18q21.1

**Summary:** HAUS1 is 1 of 8 subunits of the 390-kD human augmin complex, or HAUS complex. The augmin complex was first identified in *Drosophila*, and its name comes from the Latin verb 'augmentare,' meaning 'to increase.' The augmin complex is a microtubule-binding complex involved in microtubule generation within the mitotic spindle and is vital to mitotic spindle assembly (Goshima et al., 2008 [PubMed 18443220]; Uehara et al., 2009 [PubMed 19369198]). [supplied by OMIM, Jun 2010]

**Protein Families:** Stem cell - Pluripotency

**Product images:**



Coomassie blue staining of purified HAUS1 protein (Cat# [TP304226]). The protein was produced from HEK293T cells transfected with HAUS1 cDNA clone (Cat# [RC204226]) using MegaTran 2.0 (Cat# [TT210002]).