

Product datasheet for PH304225

WDFY2 (NM_052950) Human Mass Spec Standard

Product data:

Product Type:	Mass Spec Standards
Description:	WDFY2 MS Standard C13 and N15-labeled recombinant protein (NP_443182)
Species:	Human
Expression Host:	HEK293
Expression cDNA Clone or AA Sequence:	RC204225
Predicted MW:	45.2 kDa
Protein Sequence:	>RC204225 protein sequence Red=Cloning site Green=Tags(s)

MAAEIQPKPLTRKPILLQRMEGSQEVVNMVIVPKEEGVISVSEDRTVRVWLKRDSGQYWPSVYHAMPSP
CSCMSFNPETRRLSIGLDNGTISEFILSEDYNKMPVKNYQAHQSRVTMILFVLELEWVLTGQDKQFAW
HCSESGQLGGYRTSAVASGLQFDVETRHFVIGDHSQVITLKLEQENCTLVTTFRGHTGGVTALCWDPV
QRVLFSGSSDHSVIMWDIGGRKGTAIELQGHNDRVQALSQAQTRQLISCGDGGIVVWVMDVERQETPE
WLDSDSCQKCDQPFWFNFQMWDSKKIGLRQHCRKCGKAVCGKCSSKRSSIPLMGFEFEVVRVCDSCHEA
ITDEERAPTATFHDSKHNIHVHVF DATRGWLLTSGTDKVIKLDWMTPVVS

TRTRPLEQKLI SEEDLAANDILDYKDDDDKV

Tag:	C-Myc/DDK
Purity:	> 80% as determined by SDS-PAGE and Coomassie blue staining
Concentration:	>0.05 µg/µL as determined by microplate BCA method
Labeling Method:	Labeled with [U- ¹³ C ₆ , ¹⁵ N ₄]-L-Arginine and [U- ¹³ C ₆ , ¹⁵ N ₂]-L-Lysine
Buffer:	25 mM Tris-HCl, 100 mM glycine, pH 7.3
Storage:	Store at -80°C. Avoid repeated freeze-thaw cycles.
Stability:	Stable for 3 months from receipt of products under proper storage and handling conditions.
RefSeq:	NP_443182
RefSeq Size:	3809
RefSeq ORF:	1200
Synonyms:	PROF; WDF2; ZFYVE22
Locus ID:	115825



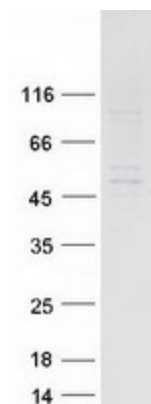
[View online »](#)

UniProt ID: [Q96P53](#)

Cytogenetics: 13q14.3

Summary: This gene encodes a protein that contains two WD domains and an FYVE zinc finger region. The function of this gene is unknown. An alternatively spliced transcript variant of this gene may exist. [provided by RefSeq, Jul 2008]

Product images:



Coomassie blue staining of purified WDFY2 protein (Cat# [TP304225]). The protein was produced from HEK293T cells transfected with WDFY2 cDNA clone (Cat# [RC204225]) using MegaTran 2.0 (Cat# [TT210002]).