

## Product datasheet for PH304215

### G protein alpha Inhibitor 2 (GNAI2) (NM\_002070) Human Mass Spec Standard

#### Product data:

Product Type:	Mass Spec Standards
Description:	GNAI2 MS Standard C13 and N15-labeled recombinant protein (NP_002061)
Species:	Human
Expression Host:	HEK293
Expression cDNA Clone or AA Sequence:	RC204215
Predicted MW:	40.5 kDa
Protein Sequence:	>RC204215 protein sequence Red=Cloning site Green=Tags(s)  MGCTVSAEDKAAAERSKMIDKNLREDGEKAAREVKLLLLGAGESGKSTIVKQMKIIHEDGYSEEECRQYR AVVYSNTIQSIMAIVKAMGNLQIDFADPSRADDARQLFALSCTAEEQGVLPPDL SGVIRRLWADHGVQAC FGRSREYQLNDSAAYYLNDLERIAQSDYIPTQQDVLRTYKTTGIVETHFTFKDLHFKMFDVGGQRSEK KWIHCFEGVTAIIFCVALSAYDLVLAEDEEMNRMHESMKLFDSICNNKWFDTTSIILFLNKKDLFEEKIT HSPLTICFPEYTGANKYDEAASYIQSKFEDLNKRKDTKEIYTHFTCATDTKNVQVFVDAVTDVIIKNNLK DCGLF  TRTRPLEQKLI SEEDLAANDILDYKDDDDKV
Tag:	C-Myc/DDK
Purity:	> 80% as determined by SDS-PAGE and Coomassie blue staining
Concentration:	>0.05 µg/µL as determined by microplate BCA method
Labeling Method:	Labeled with [U- <sup>13</sup> C <sub>6</sub> , <sup>15</sup> N <sub>4</sub> ]-L-Arginine and [U- <sup>13</sup> C <sub>6</sub> , <sup>15</sup> N <sub>2</sub> ]-L-Lysine
Buffer:	25 mM Tris-HCl, 100 mM glycine, pH 7.3
Storage:	Store at -80°C. Avoid repeated freeze-thaw cycles.
Stability:	Stable for 3 months from receipt of products under proper storage and handling conditions.
RefSeq:	<u>NP_002061</u>
RefSeq Size:	2258
RefSeq ORF:	1065
Synonyms:	GIP; GNAI2B; H_LUCA15.1; H_LUCA16.1
Locus ID:	2771



[View online »](#)

UniProt ID: [P04899](#), [B3KP24](#)

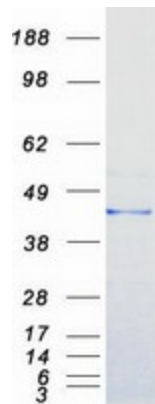
Cytogenetics: 3p21.31

Summary: The protein encoded by this gene is an alpha subunit of guanine nucleotide binding proteins (G proteins). The encoded protein contains the guanine nucleotide binding site and is involved in the hormonal regulation of adenylate cyclase. Several transcript variants encoding different isoforms have been found for this gene. [provided by RefSeq, Sep 2013]

Protein Families: Druggable Genome

Protein Pathways: Axon guidance, Chemokine signaling pathway, Gap junction, Leukocyte transendothelial migration, Long-term depression, Melanogenesis, Progesterone-mediated oocyte maturation, Tight junction

### Product images:



Coomassie blue staining of purified GNAI2 protein (Cat# [TP304215]). The protein was produced from HEK293T cells transfected with GNAI2 cDNA clone (Cat# [RC204215]) using MegaTran 2.0 (Cat# [TT210002]).